



# RIG SAFETY

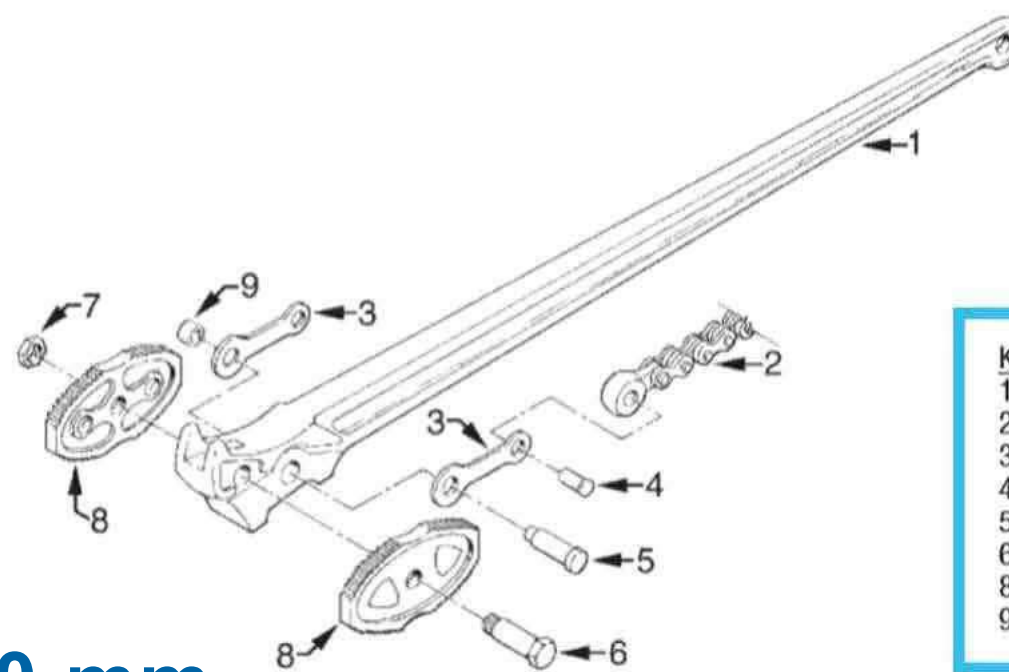
**Rig safety tools** are specialized equipment and systems designed to enhance safety on oil and gas drilling rigs and other industrial rigs. They help prevent accidents, ensure regulatory compliance, and protect both personnel and equipment. These tools are primarily used in **the oil and gas industry** on drilling rigs, production platforms, and other related installations. They are crucial for maintaining a safe working environment in the challenging and often hazardous conditions found in this sector.

By utilizing these safety tools, companies can significantly reduce the risk of accidents, ensure compliance with safety regulations, and protect both human and mechanical assets.

# TITAN REVERSIBLE CHAIN TONGS

## Specifications:

- Material: **forged steel alloy**
- Handle Type: **Steel I-Beam**
- Pipe Size: **1/4" - 2-1/2"**, to
- Handle length: **12 inches / 300 mm**
- Tong Length: **27" to 67"**
- Chain Tensile Strength from **13,800 lbs, 31,000 lbs**



KEY NO.	ITEM DESCRIPTION	NO. REQ'D.
1	HANDLE	1
2	SPECIAL CHAIN W / MASTER LINK	1
3	STIRRUP LINK	2
4	MASTER LINK STIRRUP PIN	1
5	STIRRUP LINK HANDLE PIN	1
6,7	JAW BOLT & NUT	1
8	JAWS (PAIR)	1 (PR.)
9	STIRRUP LINK BUSHING	1



# TUBING ELEVATORS & TOOLS

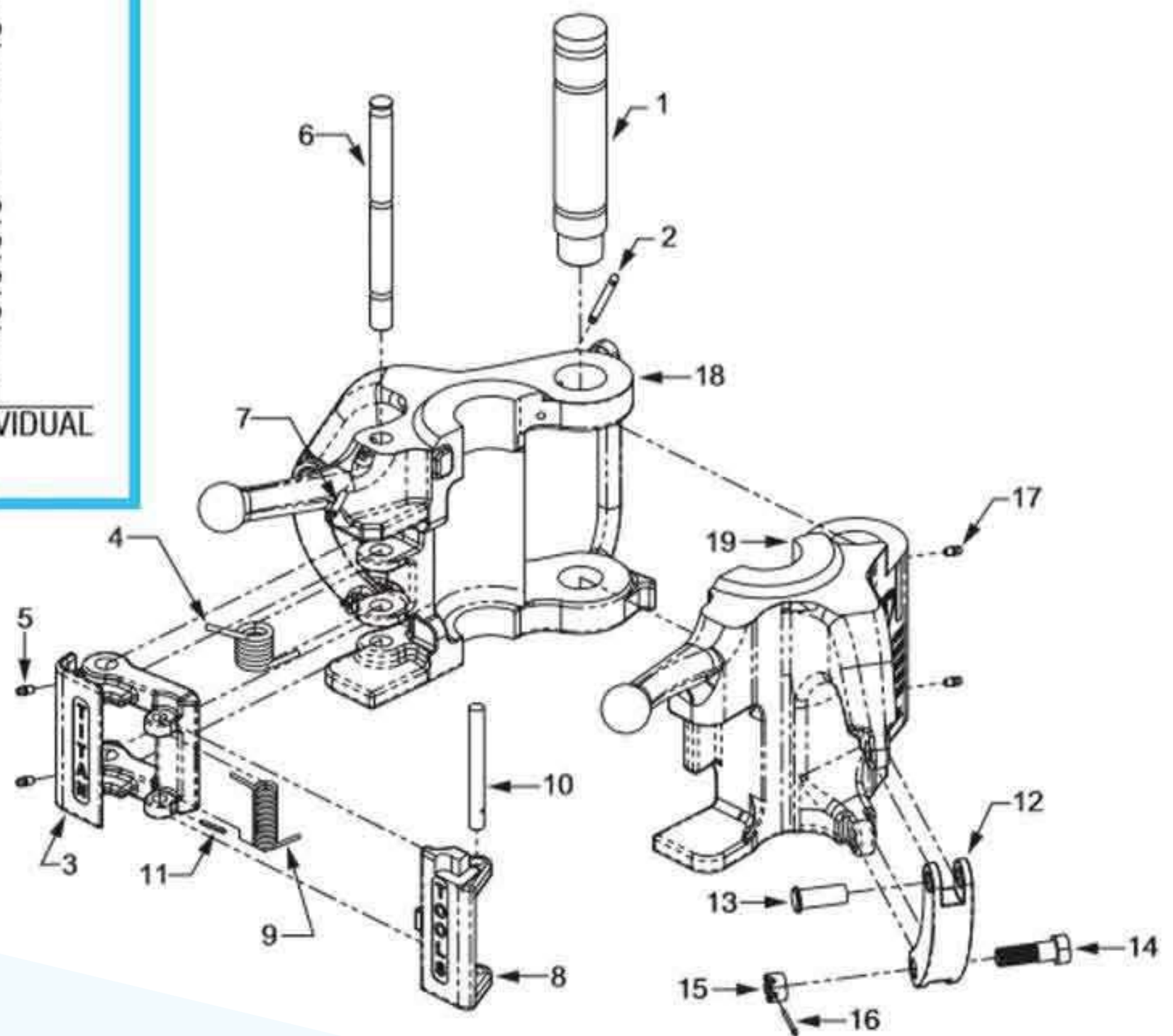
- Constructed of high-quality alloy steel and heat-treated for maximum strength and durability.
- Manufactured and tested to **API 8C**
- All TITAN Tubing Elevators are equipped with a double locking retainer assembly for maximum safety

Catalog No	Tubing Size	Weight
TEA035-238N	2-3/8" Non-Upset	53 lbs
TEA035-238U	2-3/8" External-Upset	53 lbs
TEA035-278N	2-7/8" Non-Upset	52 lbs
TEA035-278U	2-7/8" External-Upset	52 lbs
TEA100-238N	2-3/8" Non-Upset	116 lbs
TEA100-238U	2-3/8" External-Upset	116 lbs
TEA100-312N	3-1/2" Non-Upset	112 lbs
TEA100-312U	3-1/2" External-Upset	112 lbs



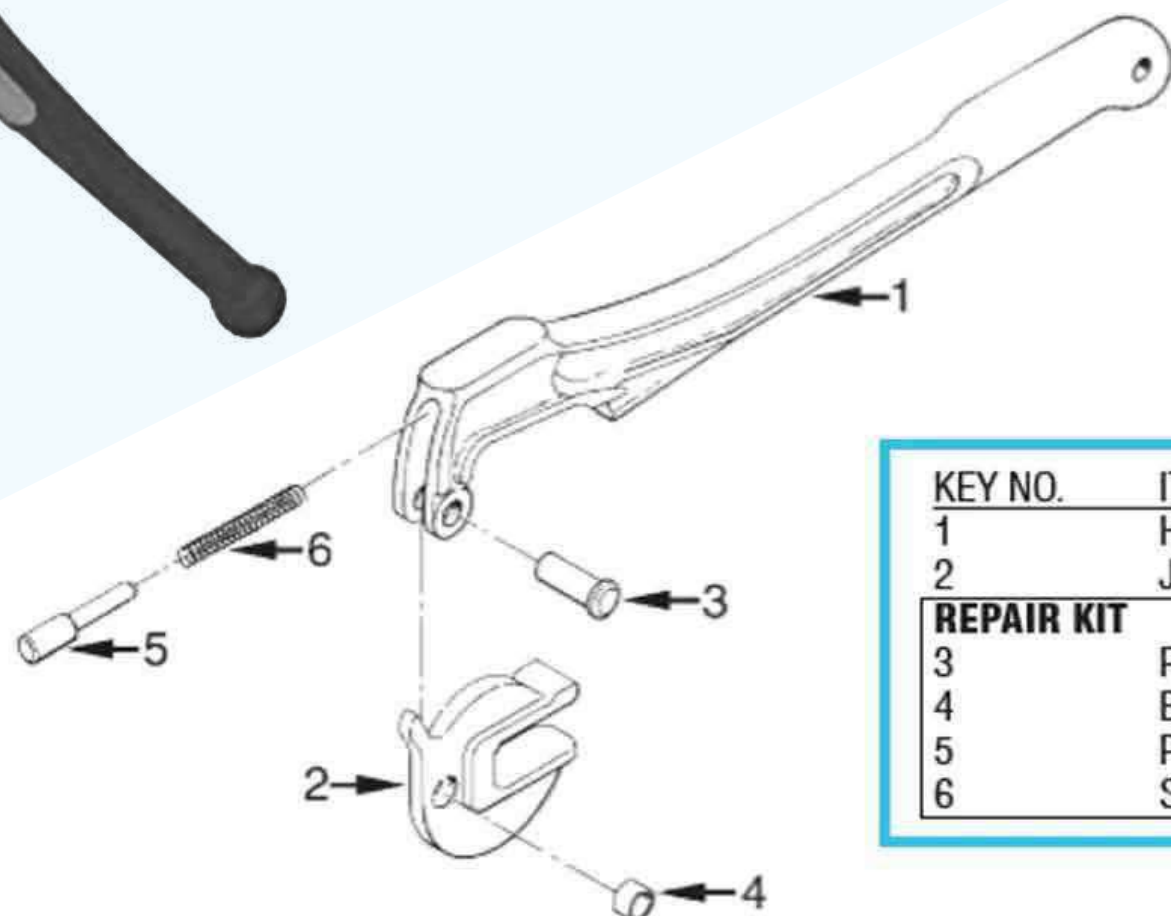
KEY NO.	ITEM DESCRIPTION	NO. REQ'D.
1,2	HINGE PIN W / SPRING PIN	1
3	RETAINER	1
4	RETAINER SPRING	1
5	RETAINER GREASE FITTING	2
6,7	RETAINER PIN W / SPRING PIN	1
8	LOCK	1
9	LOCK SPRING	1
10,11	LOCK PIN W / SPRING PIN	1
12	TIE BAR	2
13	TIE BAR RIVET	2
14,15,16	TIE BAR BOLT, NUT & COTTER	2
17	RIGHT BODY GREASE FITTING	2
18	LEFT BODY*	1
19	RIGHT BODY*	1

\*KEY NOS. 18 AND 19 ARE NOT AVAILABLE AS INDIVIDUAL COMPONENTS.



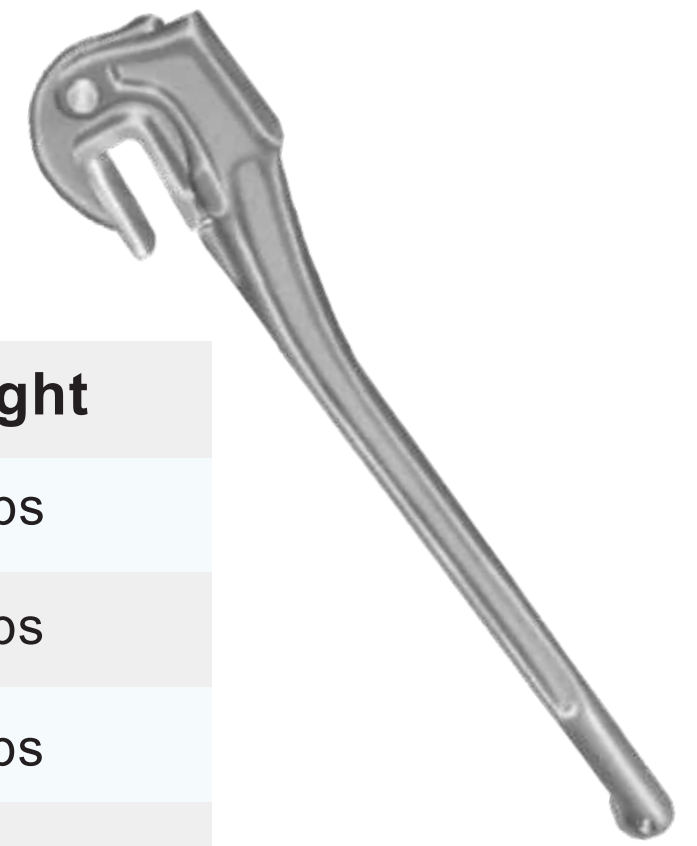
## PETOL SUCKEROD WRENCHES

**PETOL SUCKEROD WRENCHES** are made of high-quality, heat-treated alloy steel and feature a smooth “snap-up” hammer-action to quickly break the toughest rod or coupling joint.



KEY NO.	ITEM DESCRIPTION	NO. REQ'D.
1	HANDLE	1
2	JAW	1
<b>REPAIR KIT</b>		
3	RIVET	1
4	BUSHING	1
5	PLUNGER	1
6	SPRING	1

## PETOL SUCKEROD WRENCHES



Part No	Wrench square	Rod size	Length	Weight
QA0-14	5/8"	1/2"	14"	4 lbs
QA1-19	7/8"	5/8"	19"	6 lbs
QA2-19	1"	3/4", 7/8"	19"	7 lbs
QA1-19R(for EL rods)	1-1/8"	3/4", 7/8"	19"	6 lbs
QA4-19	1-5/16"	1"	19"	7 lbs
QA5-19	1-1/2"	1-1/8"	19"	7 lbs

## PETOL SUCKEROD SPIN WRENCHES

**PETOL SUCKEROD SPIN WRENCHES** are used for making up rods when a “snap-up” type wrench is not necessary.

They come in two sizes, are made of alloy steel, and are heat-treated to withstand rugged use.

Part No	Wrench square	Rod size	Length	Weight
QS1-16	7/8"	5/8"	16"	4-7/8 lbs.
QS2-16	1"	3/4", 7/8"	16"	4-3/4 lbs.

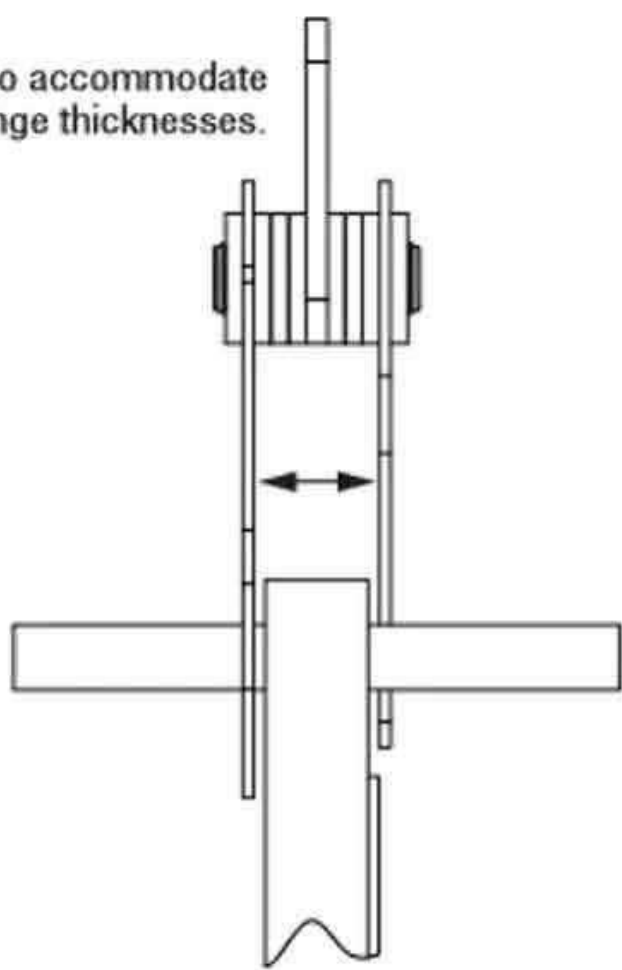


# TITAN FLANGE LIFTER

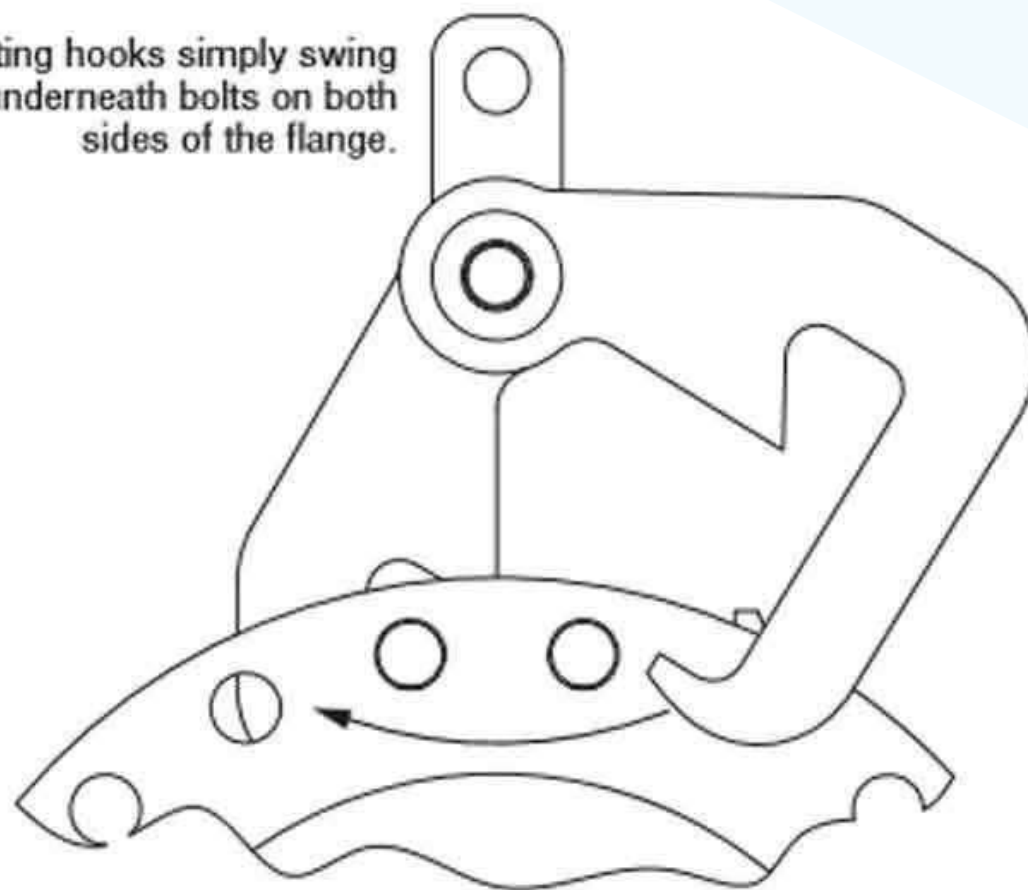
## Specifications:

- In compliance with ASME Specifications **B30.20** and **BTH-1**
- Die stamped with load rating and serial number
- Powder-coated finish
- Fits Bolt Size ranging from **3/4" - 1-1/2"** to **1-1/2" - 2-1/2"**
- Fits Flange Thickness ranging from **1/2" – 3 3/4"** and **1/2" – 7"**
- Load capacity rating **1000 lbs. to 2000 lbs.**
- Interchangeable gaskets and brackets **1/2" - 3-3/4"** to **1/2" - 7"**
- Available in **2 models**

Adjustable to accommodate various flange thicknesses.



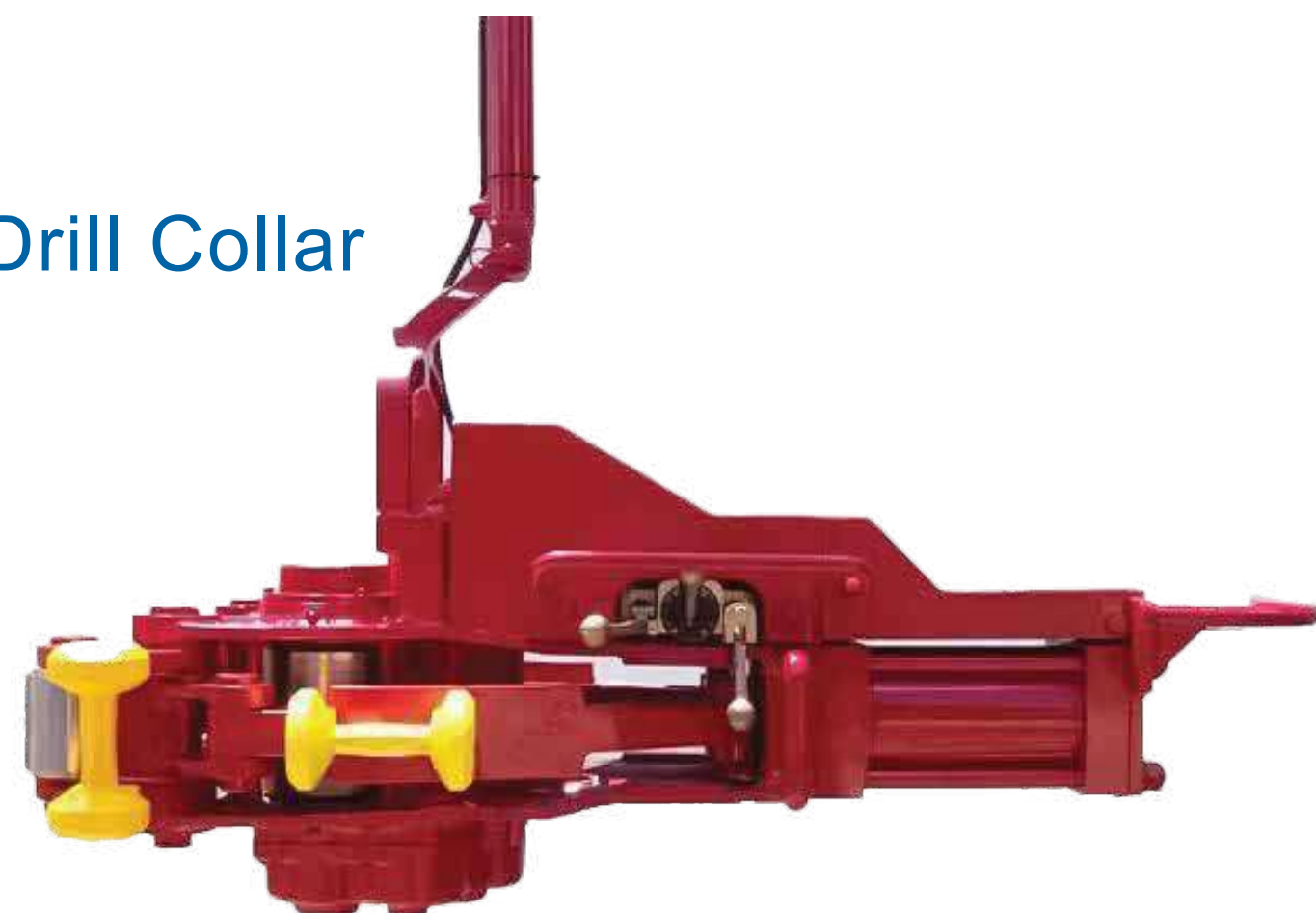
Lifting hooks simply swing underneath bolts on both sides of the flange.



# SPINNING WRENCH

## Specifications:

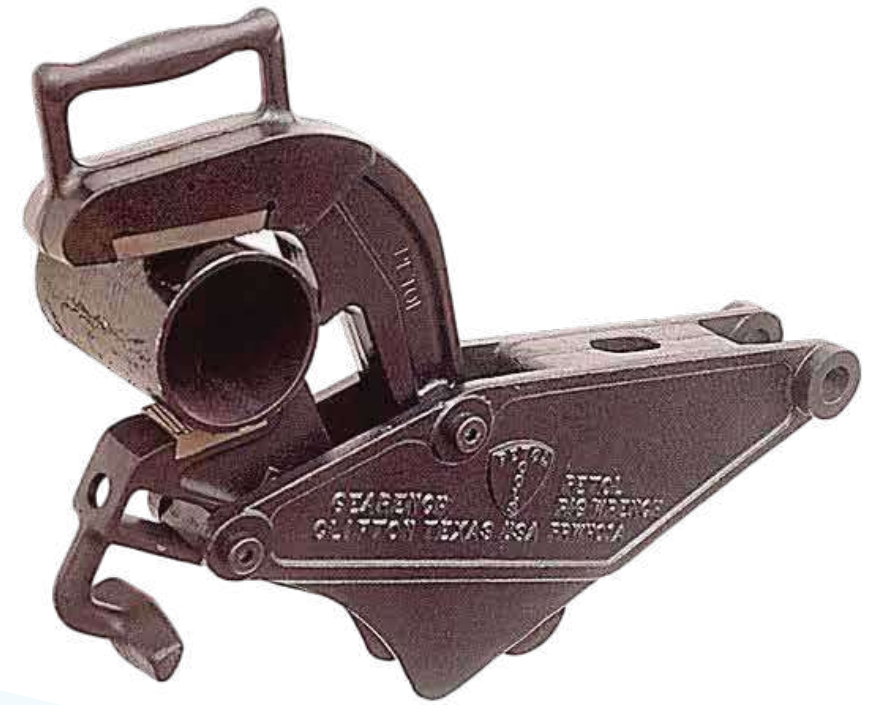
- Size Range : **2-7/8" to 9-1/2"** O.D. Drill Pipe/ Drill Collar
- Normal Operating Pressure : **2,000 PSI**
- Torque(5" dia. Pipe ) : **900 – 1000 ft. – lbs.**
- Speed (5" dia. Pipe) : **100 rpm**
- Weight : **850 pounds**
- Hydraulic Power Requirement : **29 – 45 GPM**



# PETOL RIG WRENCHES

## Specifications:

- Rig Wrenches are used to tighten pipes on higher pressure oil rigs
- Perfect solution for breaking, tightening, or moving pipe (typically used in rigs) and casing
- Rigs typically use rig tongs for two reasons; pulling apart or tightening the drill pipe, casing, or tubing.
- The new series of rig wrench has the capability to make up or break out drill pipes on rig floors, making it safer and more efficient.
- PETOL Rig Wrenches, engineered in the USA



# PETOL™ DRILL PIPE TONGS

## Specifications:

- PETOL™ offers drill pipe tongs for use on rig floor pipes.
- PETOL™ DRILL PIPE TONGS are particularly tailored for making up and breaking out drill pipes, casing, and pneumatic drills.
- They are available in multiple models.



CATALOG NO	O.D.*	GRIPPING WIDTH	HANDLE LENGTH	WEIGHT
DA1344	1" - 6"	4"	8"	12 lbs.
DA2344-C12	2-1/8" - 5"	4.44"	12"	27 lbs.
DA2344-L21	2-1/8" - 5"	4.44"	21"	31 lbs.
DA4174-L08	3" - 8-1/4"	5.00"	8"	40 lbs.
DA4174-C12	3" - 8-1/4"	5.00"	12"	43 lbs.
DA4174-L21	3" - 8-1/4"	5.00"	21"	45 lbs.
DA4174-L36	3" - 8-1/4"	5.00"	36"	58 lbs.
DA6184-C10	4-1/4" - 10-3/4"	4.88"	10"	49 lbs.
DA6184-L36	4-1/4" - 10-3/4"	4.88"	36"	74 lbs.
DA8184-C09	4" - 14"	7.25"	9"	91 lbs.
DA8184-C18	4" - 14"	7.25"	18"	120 lbs.
DA8184-L23	4" - 14"	7.25"	23"	114 lbs.
DA8184-L28	4" - 14"	7.25"	28"	122 lbs.
DA8184-L36	4" - 14"	7.25"	36"	129 lbs.

## PETOL BULL TONGS

- **PETOL Bull Tongs** comes in three different models- combining versatility, quality, and self-explanatory models.
- **PETOL Bull Tongs** are the most versatile tools for making up and breaking out tool joints in the shop and on the drilling rig.



CATALOG NO	O.D.*	GRIPPING WIDTH	HANDLE LENGTH	WEIGHT
LA155-16	3-1/2" - 16"	4.38"	32"	67 lbs.
LA16H	4" - 16"	6.88"	36"	96 lbs.
LA116-C09	6" - 17"	7.55"	9"	95 lbs.
LA116-C18	6" - 17"	7.55"	18"	124 lbs.
LA116-23	6" - 17"	7.55"	23"	118 lbs.
LA116-28	6" - 17"	7.55"	28"	126 lbs.
LA116	5" - 17"	7.55"	36"	133 lbs.
LA118	5-1/2" - 20"	8.94"	48"	357 lbs.
LA120	6" - 22"	10.00"	72"	376 lbs.
LA116H	16" - 40"	7.63"	36"	218 lbs.
LA116HX	30-1/8" - 65-7/8"	7.56"	36"	239 lbs.

