



# LOCKS, TAGS, SIGNS

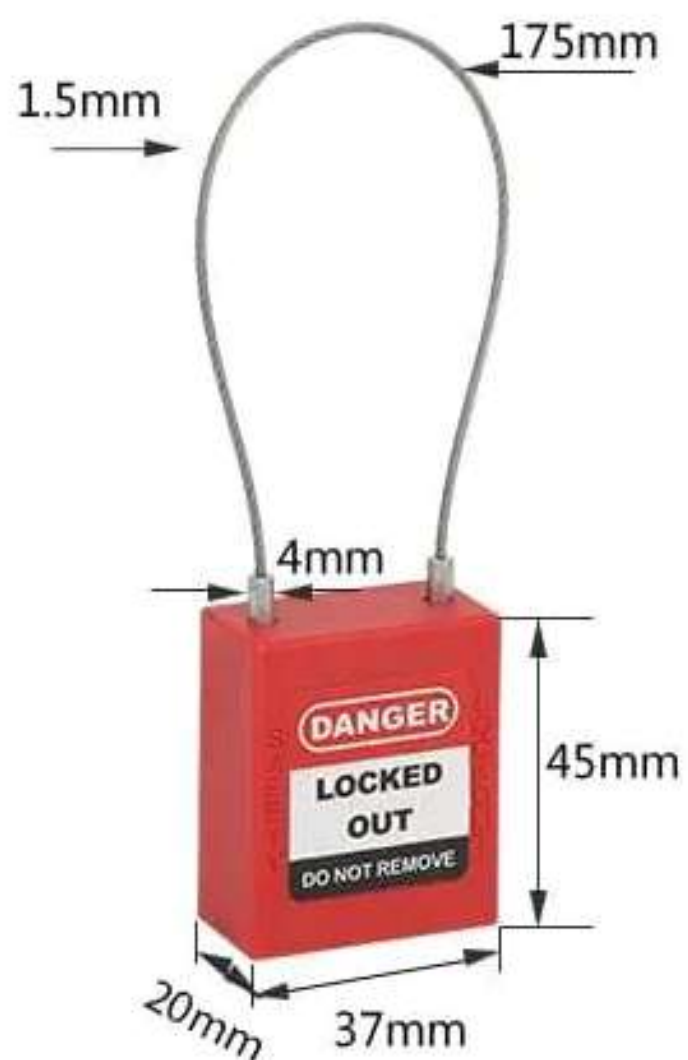
**Locks, tags, and signs** serve as essential tools in this endeavor, each playing a crucial role in safeguarding our environments. Lockout tagout signs and locks help you communicate safely next to lockout points. You can easily attach them and warn workers about dangers. Keep your workers out of danger with the right Lockout Tagout solutions. They're available in various color codes, headers, formats, and designs.





# Safety Lockout Padlocks

## Steel Cable Shackle Safety Padlock PC175D1.5



- **Product Code:** PC175D1.5
- **Body Size:** 37mm, 45mm, 20mm
- **Shackle Size:** 175mm, 4mm, 1.5mm
- **Lock Body:** Nylon
- **Lock Shackle:** Stainless Steel
- **All different colors available**

- Reinforced nylon body, withstand temperature from -20c to +80c.
- The cable shackle is made from stainless steel, ensuring the strength and can't be deformed easily.
- Cable Length: 175mm, other cable lengths can be customized
- Cable diameter :5mm.

Part No	Description	Shackle Material	Specification
KA-PC175	Keyed Alike	Stainless Steel Cable	"KA": Each padlock is keyed the same in one group  "P": Straight edge plastic lock body
KD- PC175	Keyed Differ		
MK- PC175	Keyed & Alike/Differ		
GMK- PC175	Grand Master Key		





# Aluminum Shackle Safety Padlock P76A

## Three size of shackle choice

Other shackle lengths can be customized



- **Product Code:** P76A, P36A, P25A
- **Body Size:** 37mm, 45mm, 20mm
- **Shackle Size:** 25mm, 38mm, 76mm
- **Lock Body:** Nylon
- **Lock Shackle:** Aluminum Shackle
- **All different colors available**

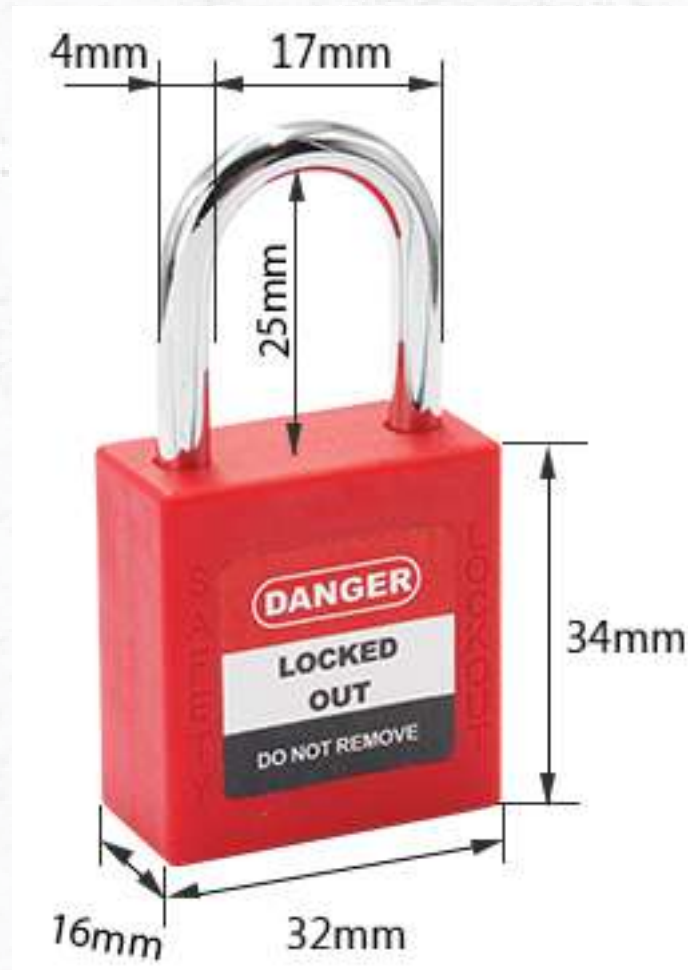
- Reinforced nylon body, withstand temperature from -20c to +120c.
- When the shackle is open, the key can't be removed.
- Aluminum shackle is spark proof with surface oxidation treatment.

Part No	Shackle Material	Specification
P25A	Aluminum Cable	Support keyed alike, keyed differ, master keyed and grand master keyed system.
P38A		
P76A		





# Mini Plastic Body Steel Shackle Safety Padlock PS25S



- **Product Code:** PS25S
- **Body Size:** 32mm, 34mm, 16mm
- **Shackle Size:** 25mm, 17mm, 4mm
- **Lock Body:** Nylon
- **Lock Shackle:** Chrome Plated
- **All different colors available**

Part No	Description	Shackle Material	Specification
KA-PS25S	Keyed Alike	Nylon	“KA”: Each padlock is keyed the same in one group  “P”: Straight edge plastic lock body
KD-PS25S	Keyed Differ		
MK-PS25S	Keyed & Alike/Differ		
GMK-PS25S	Grand Master Key		





# 40mm Steel Shackle Safety Padlock WDP40SD5



- **Product Code:** WDP40SD5
- **Body Size:** 42mm, 45mm, 21mm
- **Shackle Size:** 38mm
- **Lock Body:** Nylon
- **Lock Shackle:** Chrome Plated
- **All different colors available**

- The nonconductive lockout padlock is made from reinforced nylon body, withstand temperature from -20c to +120c.
- When the shackle is open, the key can't be removed.
- Lockey's unique design with patent.
- ISO9001, ISO45001, CE, ATEX, ROhs test reports supported.





# Dustproof Safety Padlock WDP40SR3



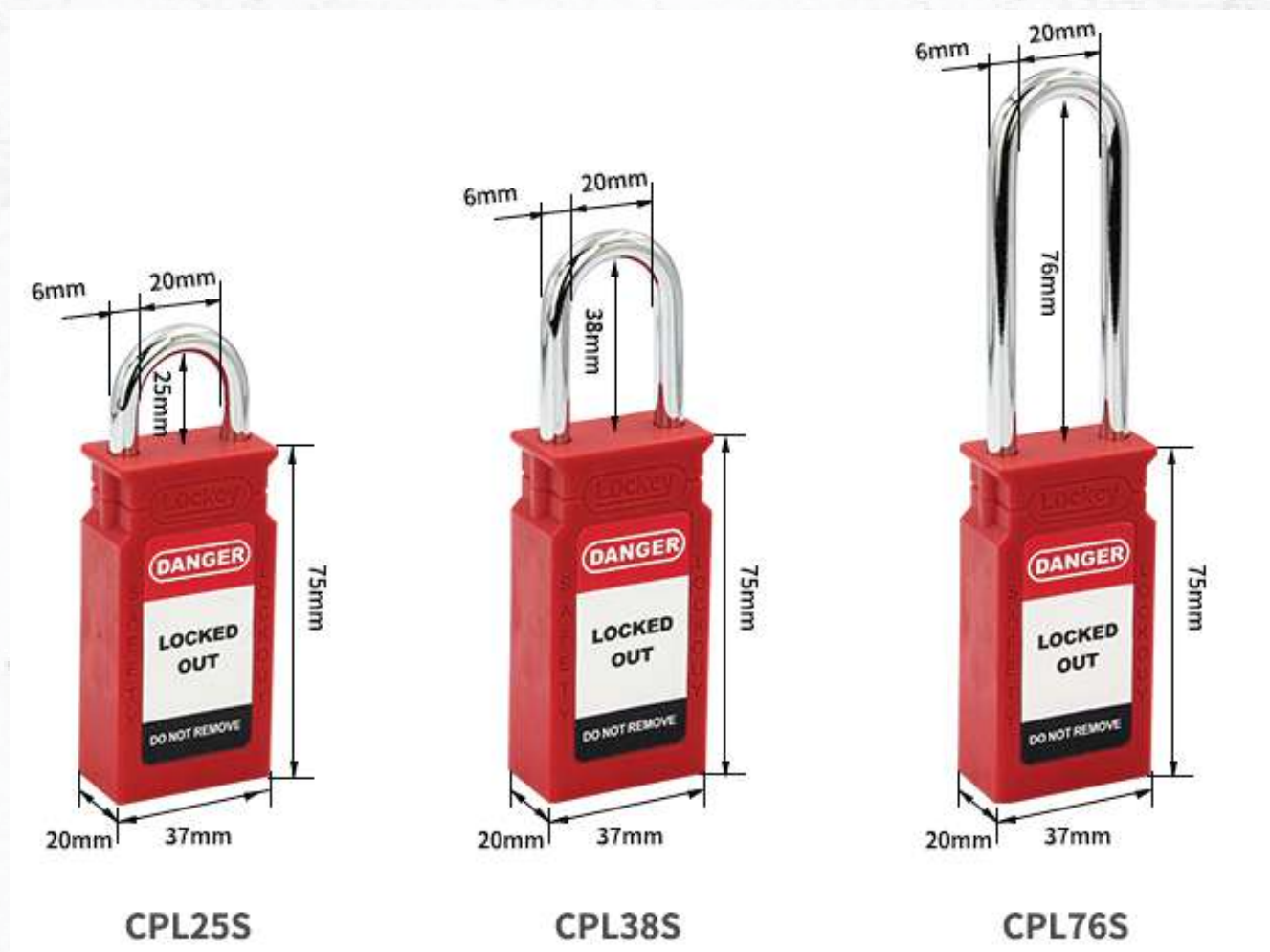
- **Product Code:** WDP40SR3
- **Body Size:** 42mm, 45mm, 21mm
- **Shackle Size:** 38mm
- **Lock Body:** Nylon
- **Lock Shackle:** Nylon PA6
- **All different colors available**

- The nylon padlock is 12-pin high security, upto 400000 pcs different locking mechanisms available.
- It's widely used in chemical, electrical, automobile industry, etc.
- Key cylinder and keys recorded for repeating orders.
- Other lengths can be customized.





# Long Body 38mm Safety Padlock CPL38S



- **Product Code:** WDP40SR3
- **Body Size:** 20mm, 37mm, 75mm
- **Shackle Size:** 25mm, 20mm, 6mm
- **Lock Body:** Nylon
- **Lock Shackle:** Chrome Plated
- **All different colors available**

Part No	Shackle Material	A(mm)	B(mm)	C(mm)	Specification
CPL25S		37	75	25	
CPL38S	Steel	37	75	38	Support keyed alike, keyed differ, master keyed and grand master keyed system.
CPL76S		37	75	76	
CPL25P		37	75	25	
CPL38P	Nylon	37	75	38	
CPL76P		37	75	76	*1key/lock





# 25mm Nylon Short Shackle Safety Padlock CP25P



- **Product Code:** CP25P
- **Body Size:** 38mm, 45mm, 21mm
- **Shackle Size:** 25mm, 20mm, 6mm
- **Lock Body:** Nylon
- **Lock Shackle:** Nylon PA6
- **All different colors available**

Part No	Description	Shackle Material	Specification
KA-CP25S	Keyed Alike	Steel	"KA": Each padlock is keyed the same in one group "P": Straight edge plastic lock body "S": Steel shackle
KD-CP25S	Keyed Differ		
MK-CP25S	Keyed & Alike/Differ		
GMK-CP25S	Grand Master Key		
KA-CP25P	Keyed Alike	Nylon	Other material can be customized: "SS": Stainless steel shackle "BS": Brass shackle
KD-CP25P	Keyed Differ		
MK-CP25P	Keyed & Alike/Differ		
GMK-CP25P	Grand Master Key		





# 38mm Steel Shackle Safety Padlock P38S



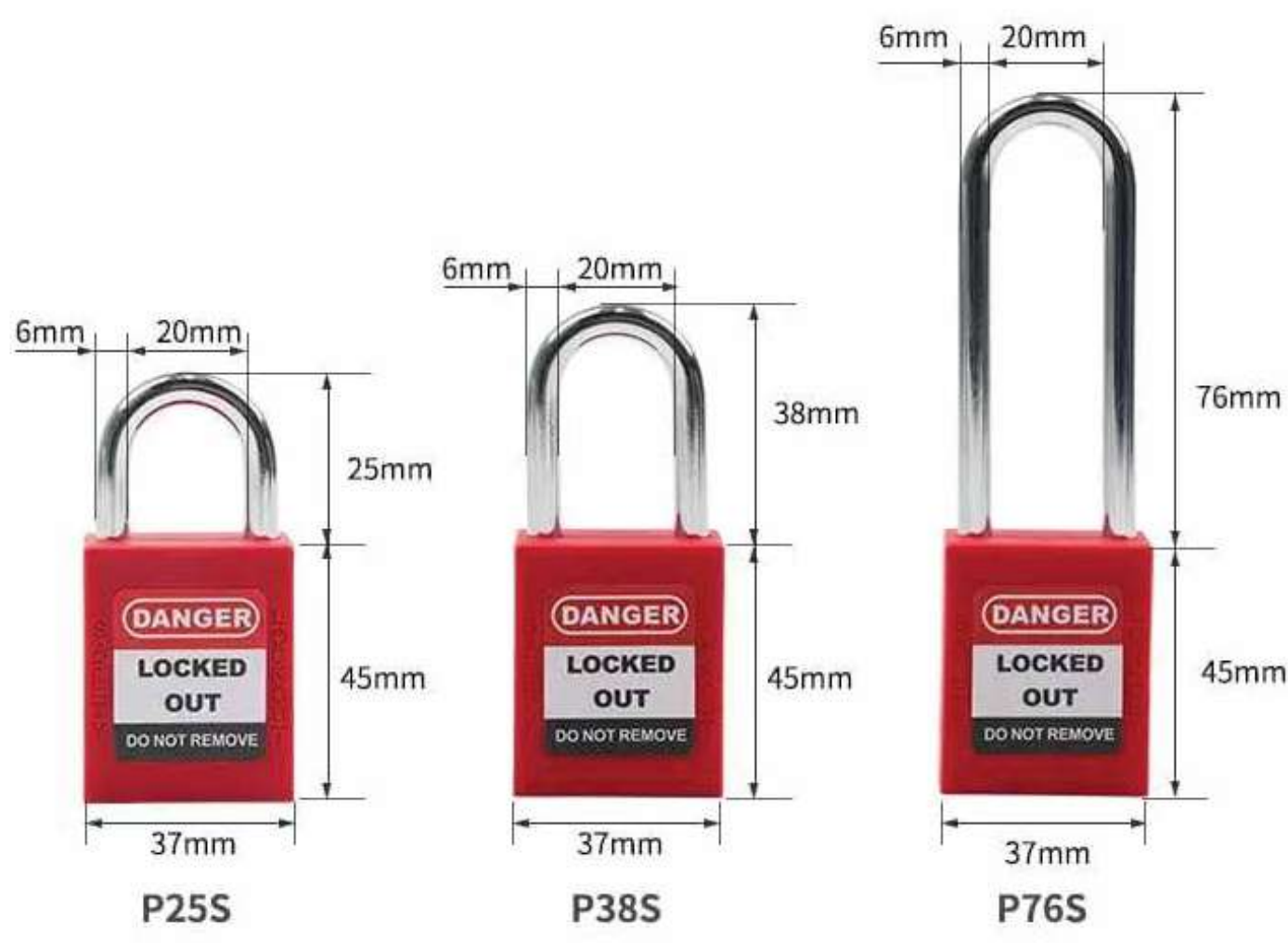
- **Product Code:** P38S
- **Body Size:** 37mm, 45mm, 21mm
- **Shackle Size:** 38mm, 20mm, 6mm
- **Lock Body:** Nylon
- **Lock Shackle:** Chrome Plated
- **All different colors available**

Part No	Description	Shackle Material	Specification
KA-P38S	Keyed Alike	Steel	“KA”: Each padlock is keyed the same in one group “P”: Straight edge plastic lock body “S”: Steel shackle
KD-P38S	Keyed Differ		
MK-P38S	Keyed & Alike/Differ		
GMK-P38S	Grand Master Key		
KA-P38P	Keyed Alike	Nylon	Other material can be customized: “SS”: Stainless steel shackle “BS”: Brass shackle
KD-P38P	Keyed Differ		
MK-P38P	Keyed & Alike/Differ		
GMK-P38P	Grand Master Key		





# 76mm Long Steel Shackle Safety Padlock P76S



- **Product Code:** P76S
- **Body Size:** 37mm, 45mm, 21mm
- **Shackle Size:** 76mm, 20mm, 6mm
- **Lock Body:** Nylon
- **Lock Shackle:** Chrome Plated
- **All different colors available**

Part No	Description	Shackle Material	Specification
KA-P76S	Keyed Alike	Steel	"KA": Each padlock is keyed the same in one group "P": Straight edge plastic lock body "S": Steel shackle
KD-P76S	Keyed Differ		
MK-P76S	Keyed & Alike/Differ		
GMK-P76S	Grand Master Key		
KA-P76S	Keyed Alike		
KD-P76S	Keyed Differ	Nylon	Other material can be customized: "SS": Stainless steel shackle "BS": Brass shackle
MK-P76S	Keyed & Alike/Differ		
GMK-P76S	Grand Master Key		
KA-P76S	Keyed Alike		





# Mini Plastic Body Safety Padlock PS25P



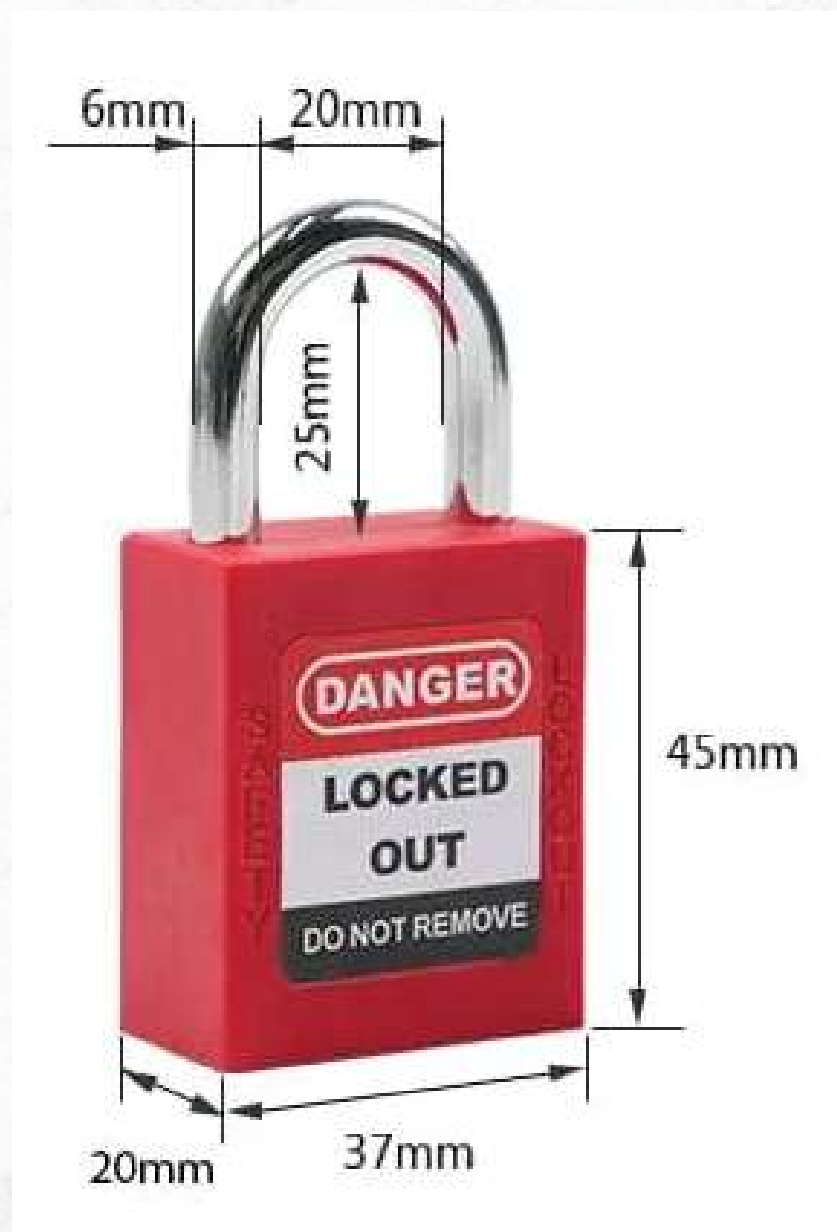
- **Product Code:** PS25P
- **Body Size:** 32mm, 44mm, 16mm
- **Shackle Size:** 25mm, 17mm, 4mm
- **Lock Body:** Nylon
- **Lock Shackle:** Nylon PA6
- **All different colors available**

Part No	Description	Shackle Material	Specification
KA-PS25P	Keyed Alike	Nylon	“KA”: Each padlock is keyed the same in one group  “P”: Straight edge plastic lock body
KD-PS25P	Keyed Differ		
MK-PS25P	Keyed & Alike/Differ		
GMK-PS25P	Grand Master Key		





# 25mm Short Steel Shackle Safety Padlock P25S



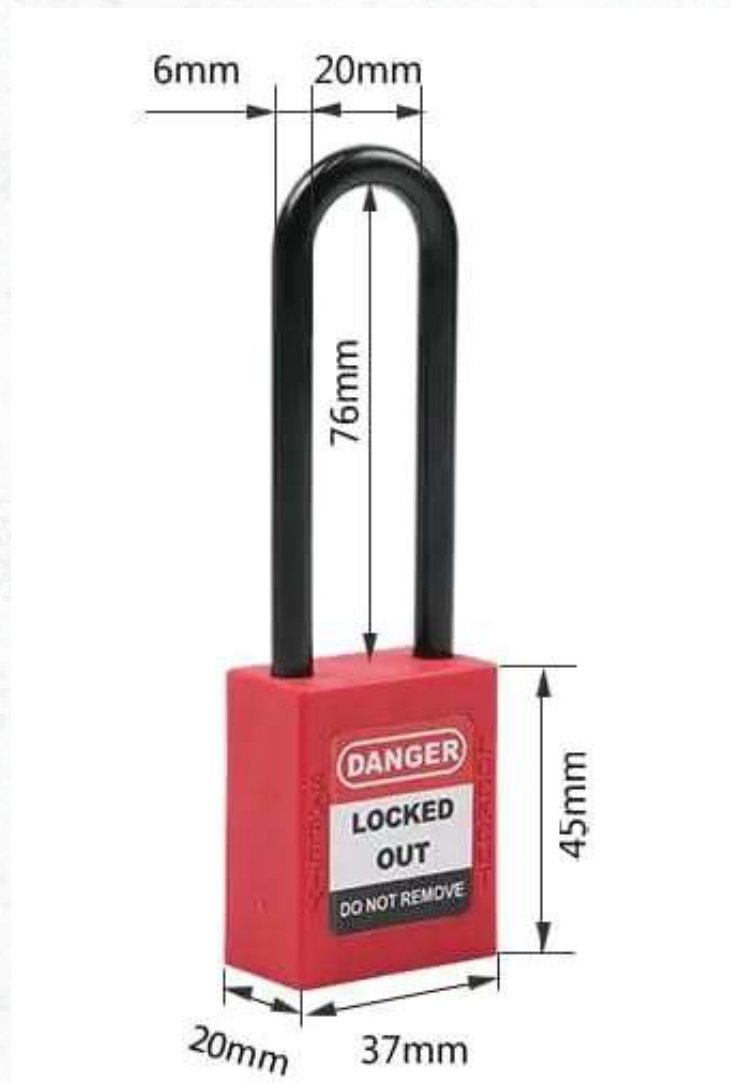
- **Product Code:** P25S
- **Body Size:** 37mm, 45mm, 20mm
- **Shackle Size:** 25mm, 20mm, 6mm
- **Lock Body:** Nylon
- **Lock Shackle:** Chromem Plated
- **All different colors available**

Part No	Description	Shackle Material	Specification
KA-P25S	Keyed Alike	Steel	"KA": Each padlock is keyed the same in one group "P": Straight edge plastic lock body "S": Steel shackle
KD-P25S	Keyed Differ		
MK-P25S	Keyed & Alike/Differ		
GMK-P25S	Grand Master Key		
KA-P25P	Keyed Alike	Nylon	Other material can be customized: "SS": Stainless steel shackle "BS": Brass shackle
KD-P25P	Keyed Differ		
MK-P25P	Keyed & Alike/Differ		
GMK-P25P	Grand Master Key		





# 76mm Plastic Long Shackle Safety Padlock P76P



- **Product Code:** P76P
- **Body Size:** 37mm, 45mm, 20mm
- **Shackle Size:** 76mm, 20mm, 6mm
- **Lock Body:** Nylon
- **Lock Shackle:** Nylon PA6
- **All different colors available**

Part No	Description	Shackle Material	Specification
KA-P76S	Keyed Alike	Steel	"KA": Each padlock is keyed the same in one group "P": Straight edge plastic lock body "S": Steel shackle
KD-P76S	Keyed Differ		
MK-P76S	Keyed & Alike/Differ		
GMK-P76S	Grand Master Key		
KA-P76P	Keyed Alike	Nylon	Other material can be customized: "SS": Stainless steel shackle "BS": Brass shackle
KD-P76P	Keyed Differ		
MK-P76P	Keyed & Alike/Differ		
GMK-P76P	Grand Master Key		





# 38mm Steel Shackle Safety Padlock CP38S



- **Product Code:** CP38S
- **Body Size:** 37mm, 45mm, 20mm
- **Shackle Size:** 76mm, 20mm, 6mm
- **Lock Body:** Nylon
- **Lock Shackle:** Chrome Plated
- **All different colors available**

Part No	Description	Shackle Material
KA-CP38S	Keyed Alike	Steel
KD-CP38S	Keyed Differ	
MK-CP38S	Keyed & Alike/Differ	
GMK-CP38S	Grand Master Key	
KA-CP38P	Keyed Alike	Nylon
KD-CP38P	Keyed Differ	
MK-CP38P	Keyed & Alike/Differ	
GMK-CP38P	Grand Master Key	



# 38mm Nylon Shackle Safety Padlock CP38P



- **Product Code:** CP38P
- **Body Size:** 38mm, 45mm, 21mm
- **Shackle Size:** 78mm, 20mm, 6mm
- **Lock Body:** Nylon
- **Lock Shackle:** Nylon PA6
- **All different colors available**

Part No	Description	Shackle Material
KA-CP38P	Keyed Alike	Nylon Shackle, Other shackle available: steel, stainless steel, aluminum, etc.
KD-CP38P	Keyed Differ	
MK-CP38P	Keyed & Alike/Differ	
GMK-CP38P	Grand Master Key	





# 25mm Steel Shackle Safety Padlock CP25S



- **Product Code:** CP25S
- **Body Size:** 38mm, 45mm, 21mm
- **Shackle Size:** 25mm, 20mm, 6mm
- **Lock Body:** Nylon
- **Lock Shackle:** Chrome Plated
- **All different colors available**

Part No	Description	Shackle Material	Specification
KA-CP25S	Keyed Alike	Steel	"KA": Each padlock is keyed the same in one group "P": Straight edge plastic lock body "S": Steel shackle
KD-CP25S	Keyed Differ		
MK-CP25S	Keyed & Alike/Differ		
GMK-CP25S	Grand Master Key		
KA-CP25P	Keyed Alike	Nylon	"A": Aluminum shackle "SS": Stainless steel shackle "BS": Brass shackle
KD-CP25P	Keyed Differ		
MK-CP25P	Keyed & Alike/Differ		
GMK-CP25P	Grand Master Key		





# 38mm Dust-Proof Steel Shackle Safety Padlock P38SDP



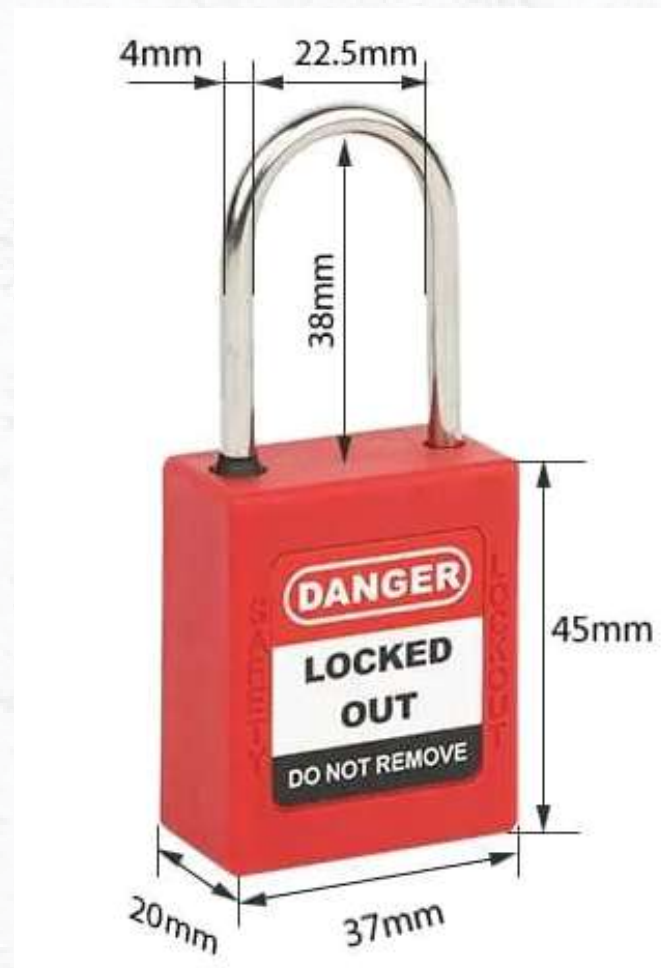
- **Product Code:** P38SDP
- **Body Size:** 38mm, 45mm, 20mm
- **Shackle Size:** 30mm, 20mm, 6mm
- **Lock Body:** Nylon
- **Lock Shackle:** Chrome Plated
- **All different colors available**

Part No	Description	Shackle Material	Specification
KA-P38SDP	Keyed Alike	Steel	"KA": Each padlock is keyed the same in one group "P": Straight edge plastic lock body "S": Steel shackle
KD-P38SDP	Keyed Differ		
MK-P38PDP	Keyed & Alike/Differ		
GMK-P38PDP	Grand Master Key		
KA-P38PDP	Keyed Alike	Nylon	Other material can be customized: "SS": Stainless steel shackle "BS": Brass shackle
KD-P38PDP	Keyed Differ		
MK-P38PDP	Keyed & Alike/Differ		
GMK-P38PDP	Grand Master Key		





# Dia. 4mm Steel 38mm Shackle Safety Padlock P38SSD4



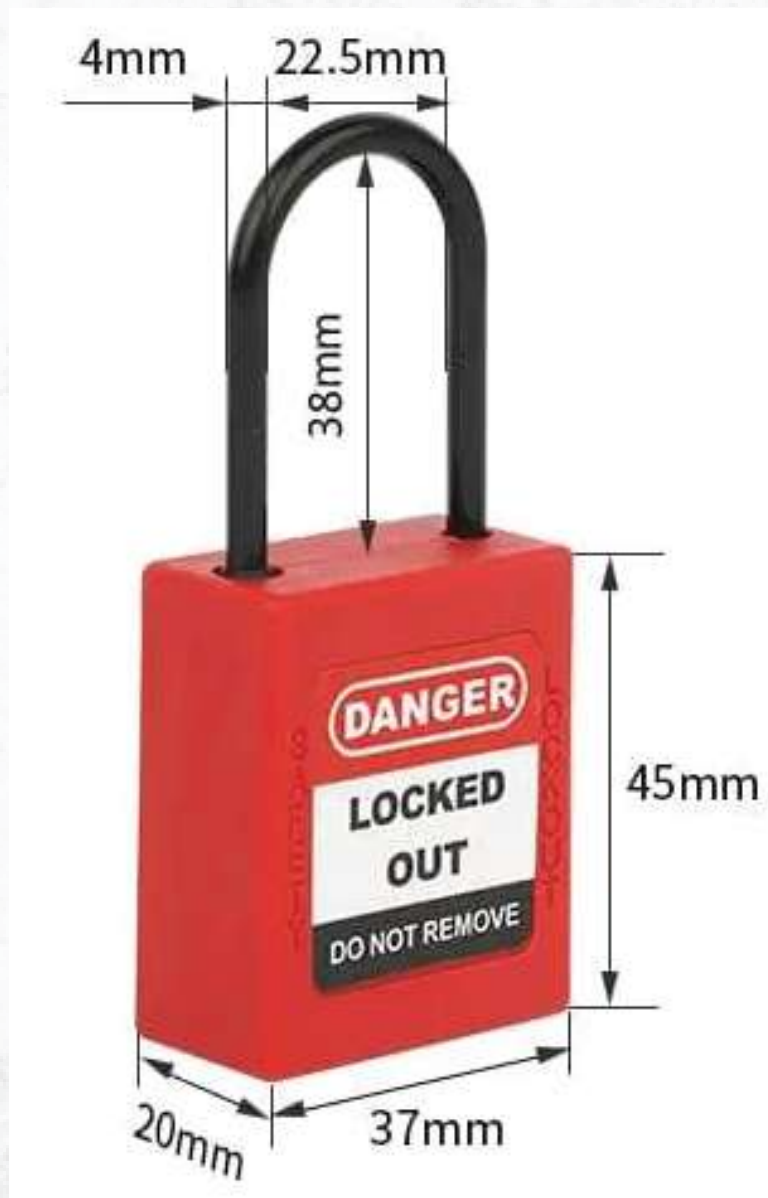
- **Product Code:** P38SSD4
- **Body Size:** 38mm, 45mm, 20mm
- **Shackle Size:** 38mm, 22.5mm, 4mm
- **Lock Body:** Nylon
- **Lock Shackle:** Chrome Plated
- **All different colors available**

Part No	Description	Shackle Material	Specification
KA-P38SSD4	Keyed Alike	Steel	"KA": Each padlock is keyed the same in one group  "P": Straight edge plastic lock body "SS": Stainless steel shackle
KD-P38SSD4	Keyed Differ		
MK-P38SSD4	Keyed & Alike/Differ		
GMK-P38SSD4	Grand Master Key		
KA-P38SPD4	Keyed Alike	Nylon	
KD-P38SPD4	Keyed Differ		
MK-P38SPD4	Keyed & Alike/Differ		
GMK-P38SPD4	Grand Master Key		





# Dia. 4mm Nylon 38mm Shackle Safety Padlock P38PD4



- **Product Code:** P38PD4
- **Body Size:** 37mm, 45mm, 20mm
- **Shackle Size:** 38mm, 22.5mm, 4mm
- **Lock Body:** Nylon
- **Lock Shackle:** Nylon PA6
- **All different colors available**

Part No	Description	Shackle Material	Specification
KA-P38SSD4	Keyed Alike	Steel	“KA”: Each padlock is keyed the same in one group “P”: Straight edge plastic lock body “SS”: Stainless steel shackle
KD-P38SSD4	Keyed Differ		
MK-P38SSD4	Keyed & Alike/Differ		
GMK-P38SSD4	Grand Master Key		
KA-P38PD4	Keyed Alike	Nylon	
KD-P38PD4	Keyed Differ		
MK-P38PD4	Keyed & Alike/Differ		
GMK-P38PD4	Grand Master Key		





# 38mm Dust-Proof Plastic Shackle Safety Padlock P38PDP



- **Product Code:** P38SDP
- **Body Size:** 38mm, 45mm, 20mm
- **Shackle Size:** 38mm, 22.5mm, 4mm
- **Lock Body:** Nylon
- **Lock Shackle:** Nylon PA6
- **All different colors available**

Part No	Description	Shackle Material	Specification
KA-P38SDP	Keyed Alike	Steel	"KA": Each padlock is keyed the same in one group "P": Straight edge plastic lock body "S": Steel shackle
KD-P38SDP	Keyed Differ		
MK-P38SDP	Keyed & Alike/Differ		
GMK-P38SDP	Grand Master Key		
KA-P38PDP	Keyed Alike	Nylon	Other material can be customized: "SS": Stainless steel shackle "BS": Brass shackle
KD-P38PDP	Keyed Differ		
MK-P38PDP	Keyed & Alike/Differ		
GMK-P38PDP	Grand Master Key		



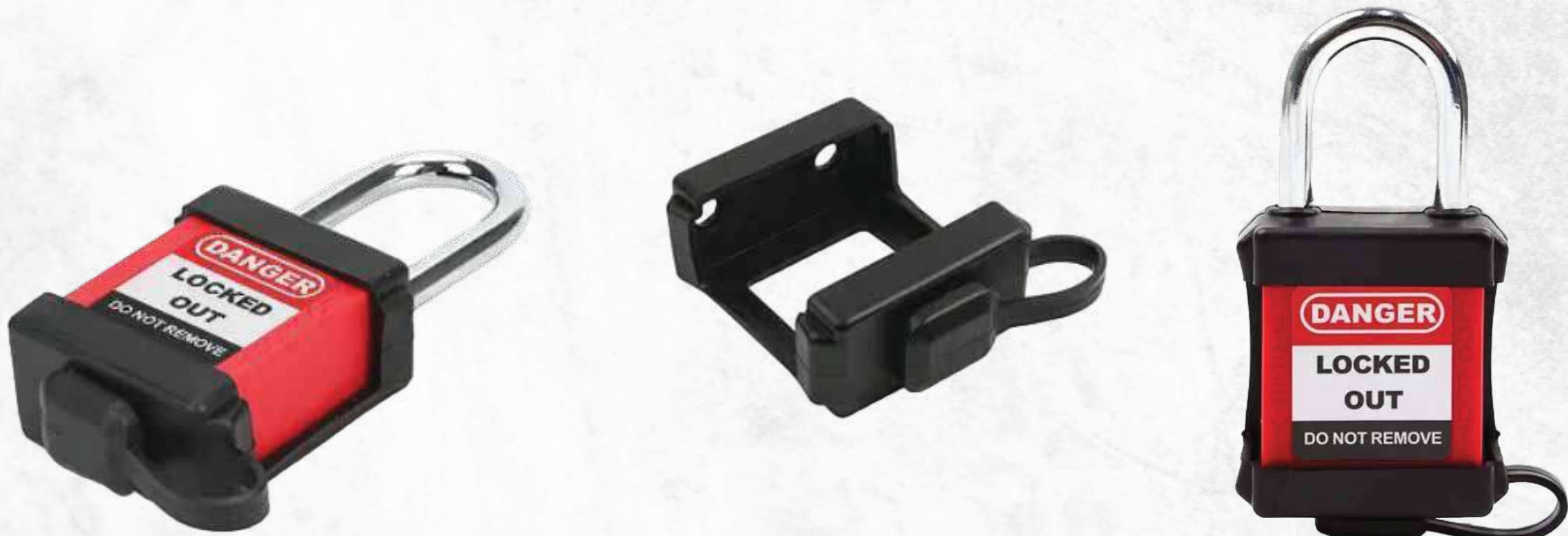


# Safety Padlock with Black Dust-proof Cover P38SR1 P38PR1



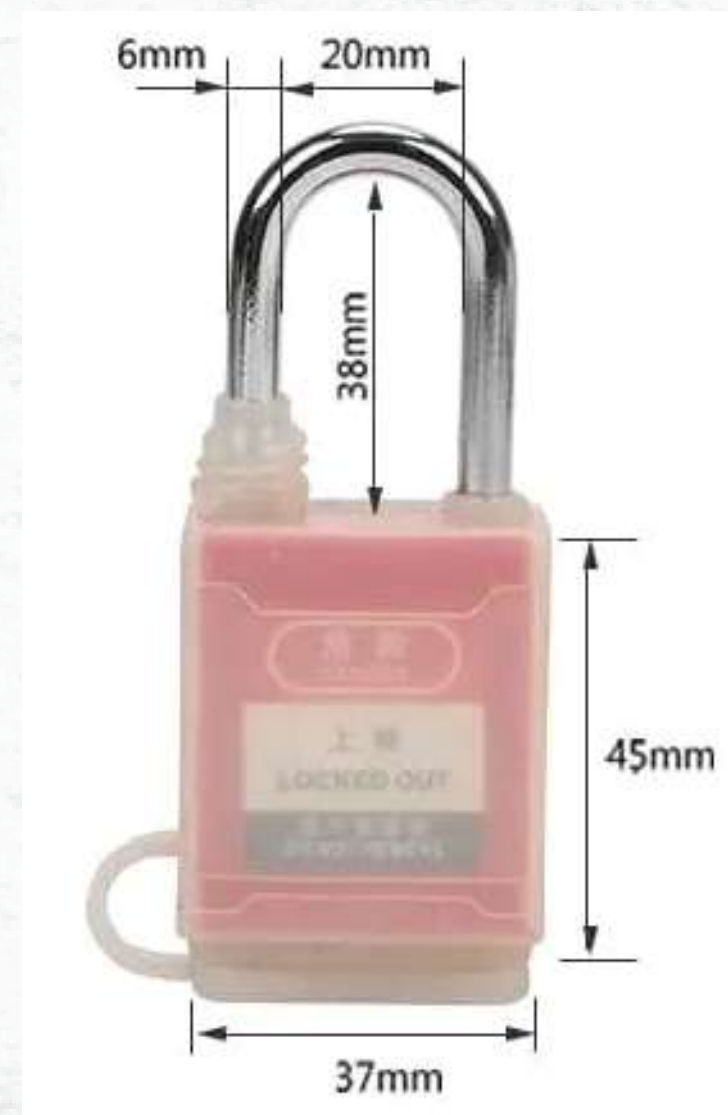
- **Product Code:** P38SDP
- **Body Size:** 38mm, 45mm, 20mm
- **Shackle Size:** 38mm, 22.5mm, 4mm
- **Lock Body:** Nylon
- **Lock Shackle:** Chrome Plated
- **All different colors available**

Part No	Description	Shackle Material	Specification
KA-P38SR1	Keyed Alike	Steel	"KA": Each padlock is keyed the same in one group "P": Straight edge plastic lock body "S": Steel shackle
KD-P38SR1	Keyed Differ		
MK-P38SR1	Keyed & Alike/Differ		
GMK-P38SR1	Grand Master Key		
KA-P38PR1	Keyed Alike	Nylon	Other material can be customized: "SS": Stainless steel shackle "BS": Brass shackle
KD-P38PR1	Keyed Differ		
MK-P38PR1	Keyed & Alike/Differ		
GMK-P38PR1	Grand Master Key		





# Safety Padlock with Translucent Dust-proof Cover P38SR2 P38PR2



- **Product Code:** P38SDP
- **Body Size:** 38mm, 45mm, 20mm
- **Shackle Size:** 38mm, 22.5mm, 4mm
- **Lock Body:** Nylon
- **Lock Shackle:** Chrome Plated
- **All different colors available**

Part No	Description	Shackle Material	Specification
KA-P38SR2	Keyed Alike	Steel	"KA": Each padlock is keyed the same in one group "P": Straight edge plastic lock body "S": Steel shackle
KD-P38SR2	Keyed Differ		
MK-P38SR2	Keyed & Alike/Differ		
GMK-P38SR2	Grand Master Key		
KA-P38PR2	Keyed Alike	Nylon	Other material can be customized: "SS": Stainless steel shackle "BS": Brass shackle
KD-P38PR2	Keyed Differ		
MK-P38PR2	Keyed & Alike/Differ		
GMK-P38PR2	Grand Master Key		





# New 76mm Long Nylon Shackle Safety Padlock CP76P



- **Product Code:** P38SDP
- **Body Size:** 37mm, 45mm, 20mm
- **Shackle Size:** 76mm, 20mm, 6mm
- **Lock Body:** Nylon
- **Lock Shackle:** Nylon PA6
- **All different colors available**

Part No	Description	Shackle Material	Specification
KA-CP76S	Keyed Alike	Steel	"P": Straight edge plastic lock body "S": Steel shackle Other material can be customized: "SS": Stainless steel shackle "BS": Brass shackle
KD-CP76S	Keyed Differ		
MK-CP76S	Keyed & Alike/Differ		
GMK-CP76S	Grand Master Key		
KA-CP76P	Keyed Alike	Nylon	
KD-CP76P	Keyed Differ		
MK-CP76P	Keyed & Alike/Differ		
GMK-CP76P	Grand Master Key		





# Steel Cable Shackle Safety Padlock PC175 D3.2



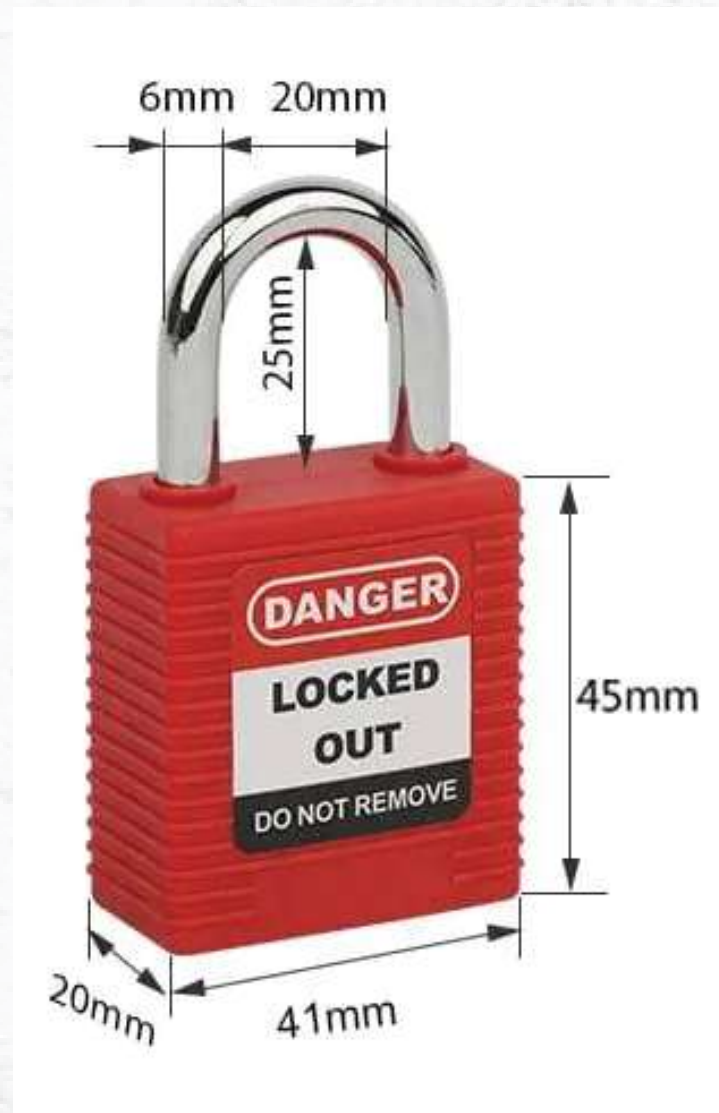
- **Product Code:** PC175 D3.2
- **Body Size:** 37mm, 45mm, 20mm
- **Shackle Size:** 175mm, 6mm, 3.2mm
- **Lock Body:** Nylon
- **Lock Shackle:** Stainless Steel
- **All different colors available**

Part No	Description	Shackle Material	Specification
KA-PC175	Keyed Alike	Stainless Steel Cable	"KA": Each padlock is keyed the same in one group  "P": Straight edge plastic lock body
KD-PC175	Keyed Differ		
MK-PC175	Keyed & Alike/Differ		
GMK-PC175	Grand Master Key		





# 25mm Steel Shackle Safety Padlock WBP25S



- **Product Code:** WBP25S
- **Body Size:** 41mm, 45mm, 20mm
- **Shackle Size:** 253mm, 20mm, 6mm
- **Lock Body:** Nylon
- **Lock Shackle:** Chrome Plated
- **All different colors available**



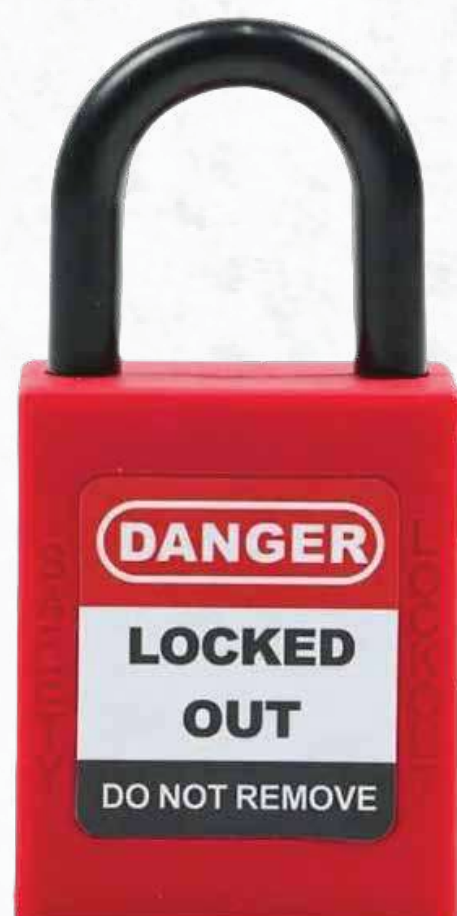


# 25mm Plastic Short Shackle Safety Padlock P25P



- **Product Code:** P25P
- **Body Size:** 37mm, 45mm, 20mm
- **Shackle Size:** 25mm, 20mm, 6mm
- **Lock Body:** Nylon
- **Lock Shackle:** NylonPA6
- **All different colors available**

Part No	Description	Shackle Material	Specification
KA-P25S	Keyed Alike	Steel	"P": Straight edge plastic lock body "S": Steel shackle Other material can be customized: "SS": Stainless steel shackle "BS": Brass shackle
KD-P25S	Keyed Differ		
MK-P25S	Keyed & Alike/Differ		
GMK-P25S	Grand Master Key		
KA-P25S	Keyed Alike	Nylon	
KD-P25S	Keyed Differ		
MK-P25S	Keyed & Alike/Differ		
GMK-P25S	Grand Master Key		





# 38mm Steel Shackle Safety Padlock WBP38S



- **Product Code:** WBP38S
- **Body Size:** 41mm, 45mm, 20mm
- **Shackle Size:** 38mm, 20mm, 6mm
- **Lock Body:** Nylon
- **Lock Shackle:** Chrome Plated
- **All different colors available**





# 25mm Steel Shackle Safety Padlock WCP25S



- **Product Code:** WBP38S
- **Body Size:** 41mm, 45mm, 20mm
- **Shackle Size:** 25mm, 20mm, 6mm
- **Lock Body:** Nylon
- **Lock Shackle:** Chrome Plated
- **All different colors available**

Part No	Shackle Material	A(mm)	B(mm)	C(mm)	Specification
WCP25S		41	45	25	Support keyed alike, keyed differ, master keyed and grand master keyed system.
WCP38S	Steel	41	45	38	
WCP76S		41	45	76	
WCP25P		41	45	25	
WCP38P	Nylon	41	45	38	
WCP76P		41	45	76	





# Aluminum Safety Padlock

## 76mm Anodized Aluminium Safety Padlock ALP76S



- **Product Code:** ALP76S
- **Body Size:** 39mm, 14mm, 41mm
- **Shackle Size:** 25mm, 38mm, 76mm
- **Lock Body:** Aluminum
- **Lock Shackle:** Chrome Plated
- **All different colors available**

Part No	Specification	Description
ALP25S	Inner shackle:25mm; diameter:6mm	
ALP38S	Inner shackle:38mm; diameter:6mm	KA, KD, MK, GMK supported



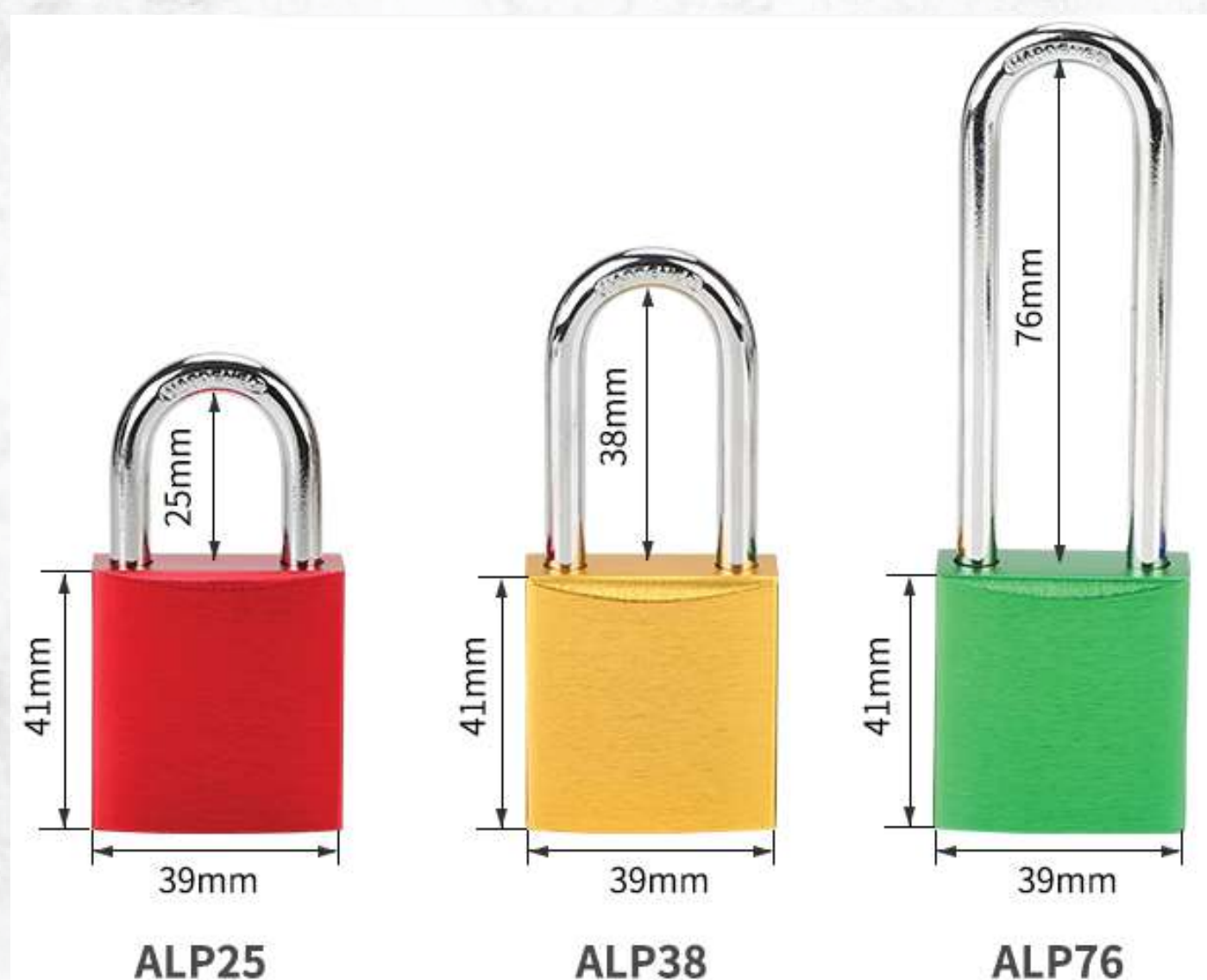


# 38mm Aluminium Safety Padlock ALP38S



- **Product Code:** ALP38S
- **Body Size:** 39mm, 14mm, 41mm
- **Shackle Size:** 25mm, 38mm, 76mm
- **Lock Body:** Aluminum
- **Lock Shackle:** Chrome Plated
- **All different colors available**

Part No	Specification	Description
ALP25S	Inner shackle:25mm; diameter:6mm	KA, KD, MK, GMK supported
ALP38S	Inner shackle:38mm; diameter:6mm	
ALP76S	Inner shackle:76mm; diameter:6mm	





# 25mm Colorful Aluminum Safety Padlock ALP25S



- **Product Code:** ALP25S, ALP38S, ALP76S
- **Body Size:** 39mm, 14mm, 41mm
- **Shackle Size:** 25mm-6mm, 38mm-6mm, 76mm-6mm.
- **Lock Body:** Aluminum
- **Lock Shackle:** Chrome Plated
- **All different colors available**

Part No	Specification	Description
ALP25S	Inner shackle:25mm; diameter:6mm	
ALP38S	Inner shackle:38mm; diameter:6mm	KA, KD, MK, GMK supported
ALP76S	Inner shackle:76mm; diameter:6mm	





# Steel Padlock

## Waterproof Laminated Padlock LPC01, LPC02



- **Product Code:** LPC01, LPC02
- **Body Size:** 48mm, 41mm
- **Shackle Size:** 27mm-7.3mm, 42mm-7.3mm
- **Lock Body:** Hardened Laminated Steel
- **Lock Shackle:** Hardened Laminated Steel
- **All different colors available**

Part No	Description	A(mm)	B(mm)	C(mm)	D(mm)
LPC01	KA, KD	28	7.3	41	48
LPC02		43	7.3	41	48

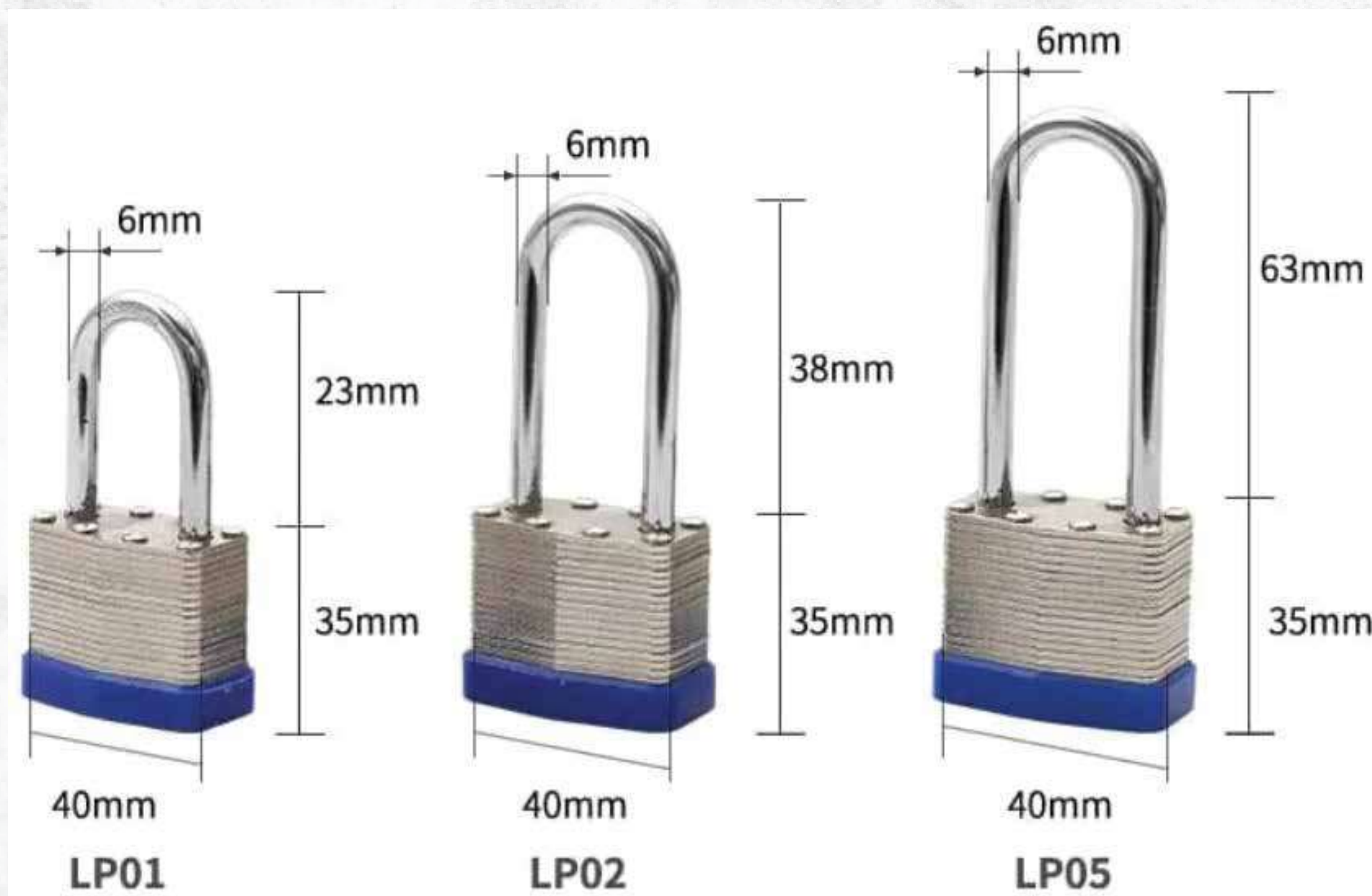




# Loto Laminated Safety Padlock LP01/02/05



- **Product Code:** LP01, LP02, LP03
- **Body Size:** 40mm, 35mm
- **Shackle Size:** 23mm-6mm, 38mm-6mm, 63mm-6mm.
- **Lock Body:** Reinforced Laminated Steel
- **Lock Shackle:** Reinforced Laminated Steel
- **All different colors available**

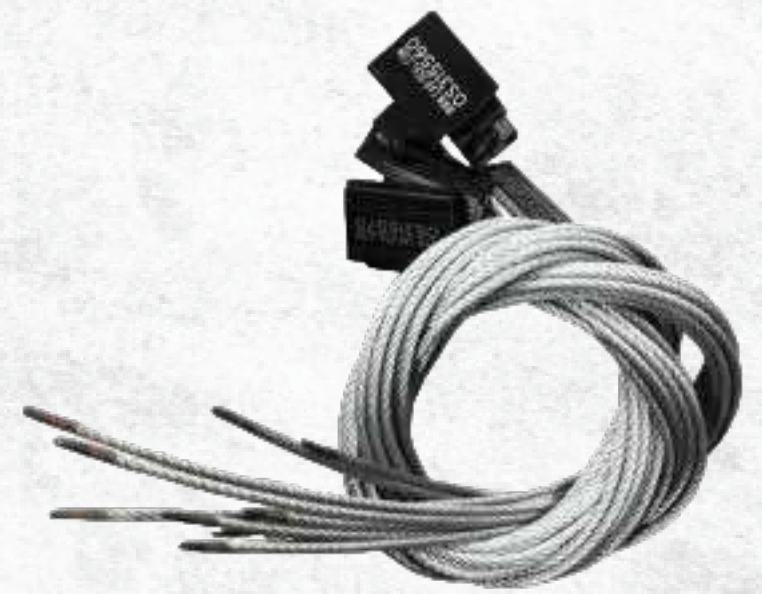




# Car Seals

## Specification:

- The seal cable length is 1,000mm (40").
- There is a choice of 4 colors: RED, YELLOW, BLUE, GREEN
- Cable is galvanised steel strand.
- Cable diameter is 2.5mm.
- Body is aluminium.
- Each seal is marked with a unique serial number.
- (We also have one size of stainless steel version available with 950mm long cable).
- Also you can specify additional engraving.





## Materials:

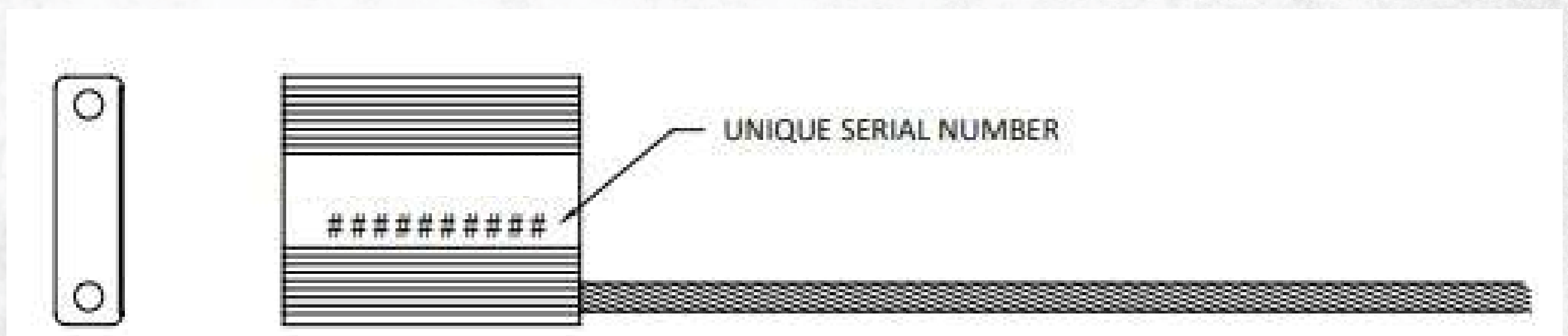
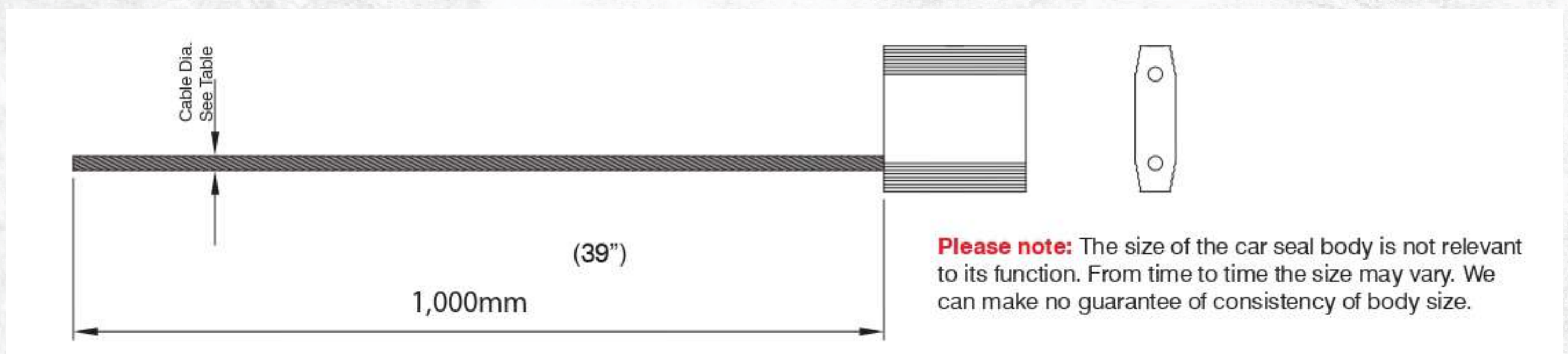
- Body: Aluminium
- Cable: Galvanised Steel, Multi-Strand

## Load to Failure:

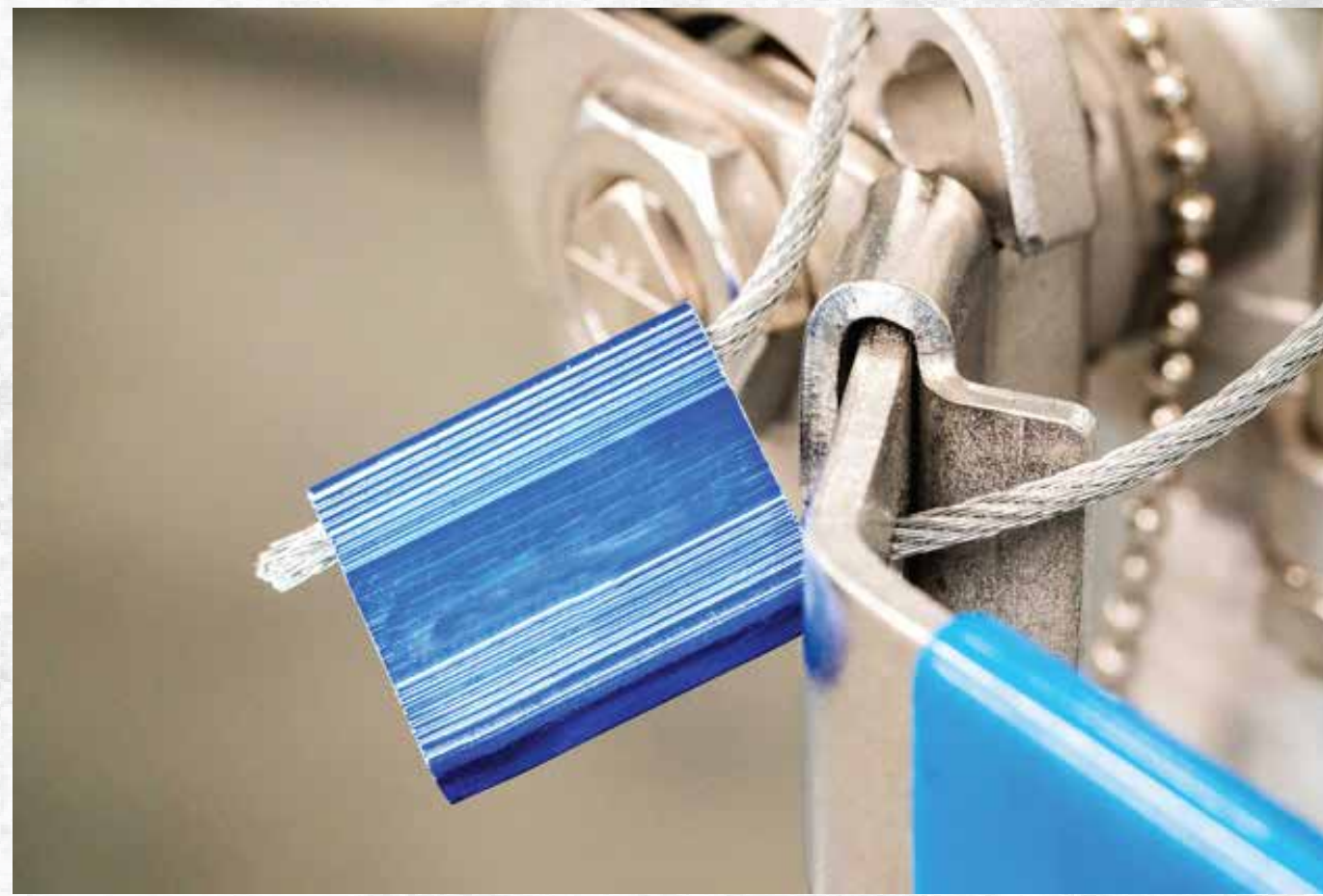
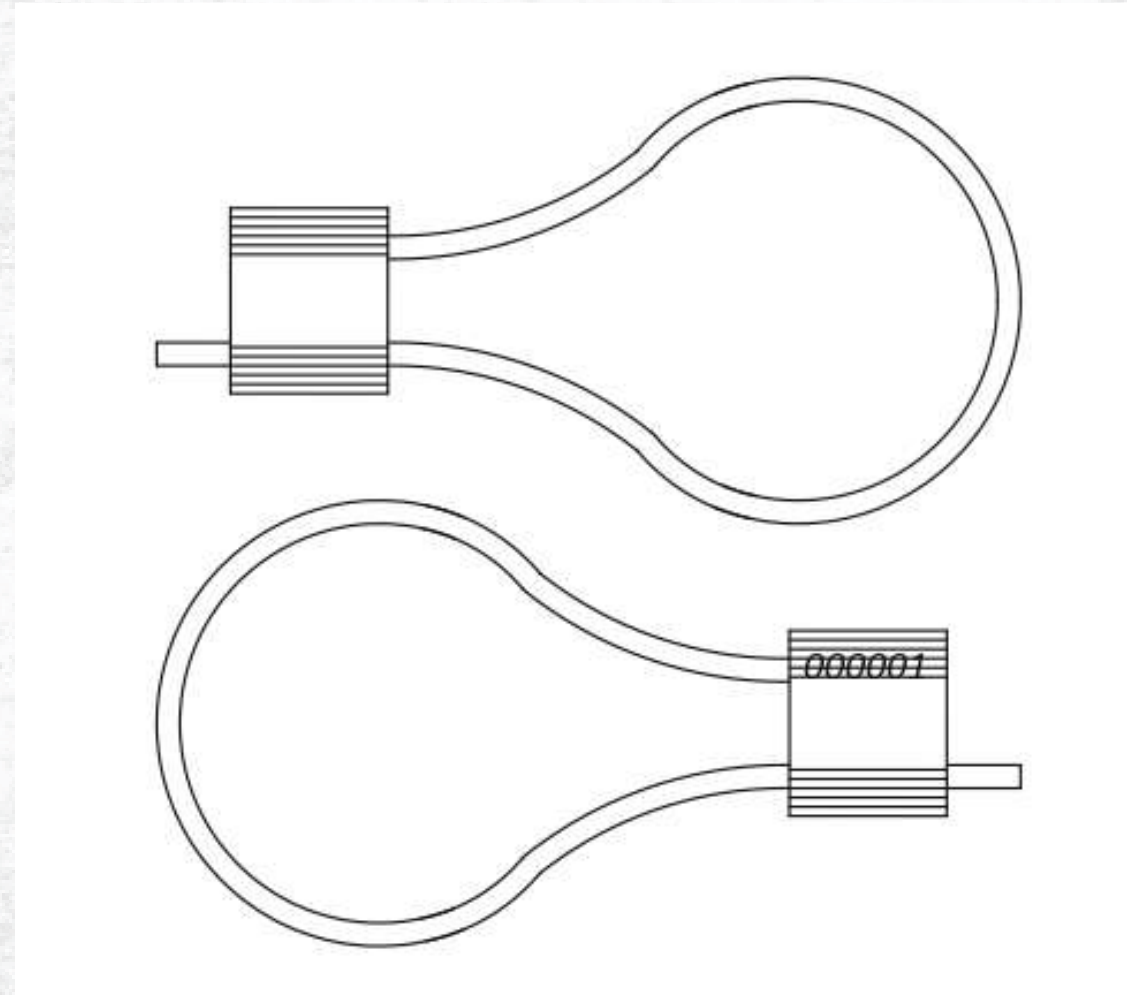
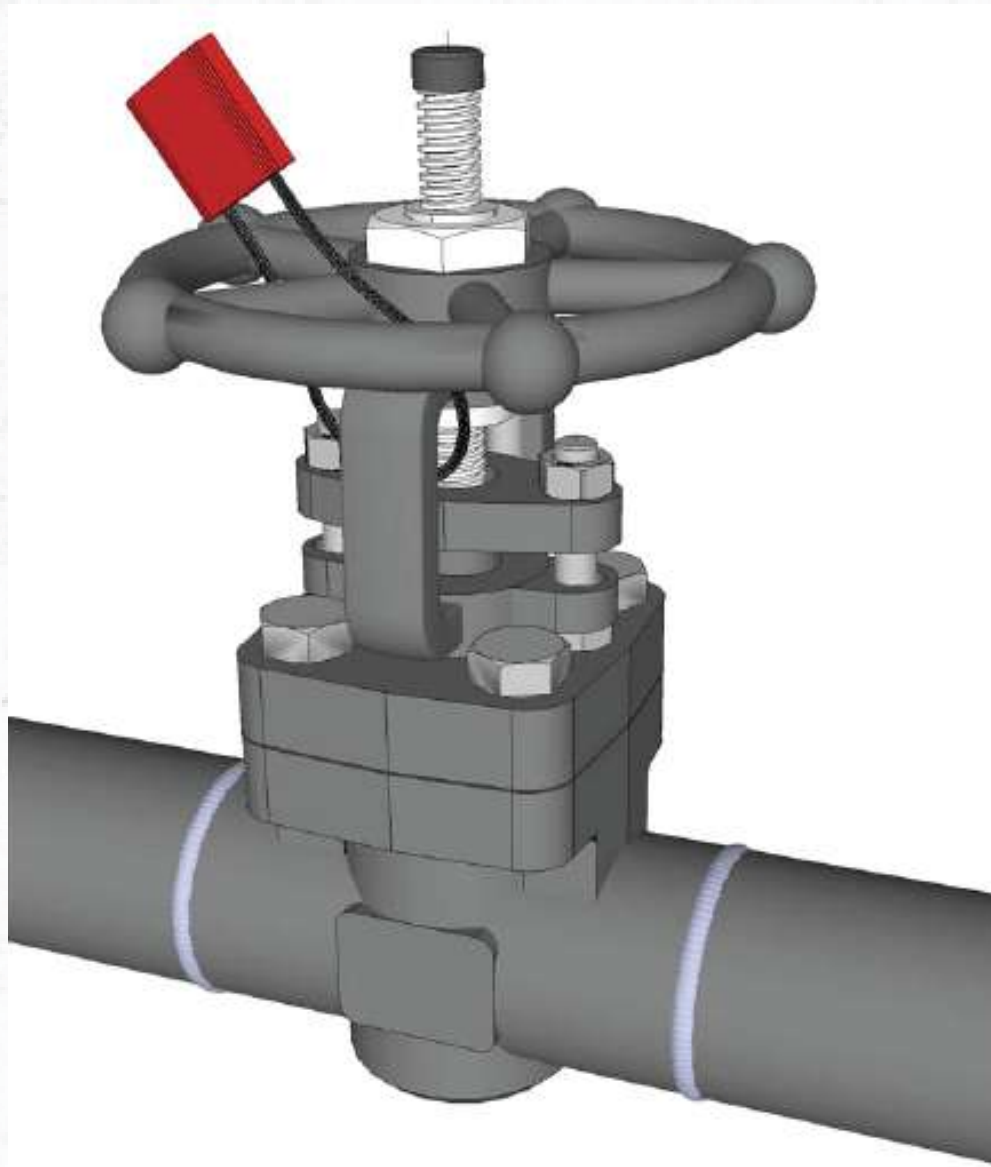
- 530kgs (1168lbs) - Damage to cable
- 450kgs (992lbs) - No damage to cable

## Size:

- 1000mm Length
- 2.5mm Diameter







## Plastic Car Seals

SmoothLock is a user friendly, highly secure tamper evident pull tight seal which can be used to secure process equipment and provide evidence of tampering.

Supplied in cartons of 1000.

Ideal for use in a car seal program.





## Specification:

- Colours: Red, Yellow, Blue, Green
- Length: 400mm
- Material: Polypropylene
- Pull Strength: 25kg (55lbs)
- Temperature range: -20°C – 80°C

## Key Features:

- Smooth strap – easy to apply
- Stainless steel spring locking mechanism gives higher security and reduced losses
- Option of being a bar-coded seal

## Benefits:

- User friendly – minimal operator training required
- Versatile operation for a wide range of applications
- Range of colours allows improved colour coded security & efficiency
- Unique serial number for easy identification and security □





# Key & Padlock Storage Cabinets

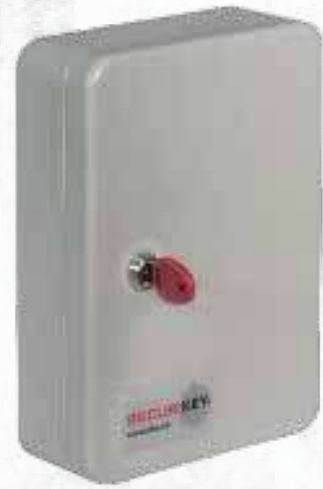
## Specification:

- Premium durability with powder coated finish.
- Colour coded hook
- Can be configured with self-adhesive numbered strips
- Colour-coded key tags
- Deep cabinet to store different size padlocks and keys
- Pre-drilled holes for easy wall mounting.

## Our Key Storage Models



Key View  
Storage Cabinets



System Key  
Storage Cabinets



Padlock Storage  
Cabinets



Key Store  
Cabinets



KeyStore  
Value Cabinets



System  
Key Cabinet



Padlock Storage  
Cabinets



Deep System  
Key Cabinets





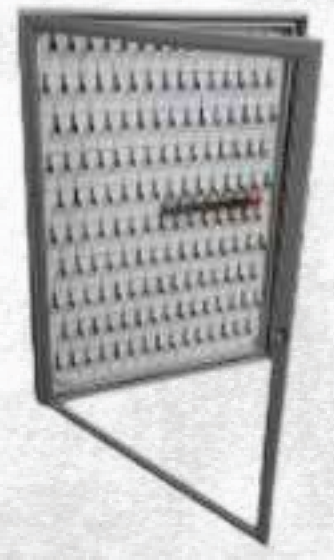
KeyStore Value Cabinets



Padlock Control Center Cabinets: 18 Hooks



Padlock Control Center Cabinets: 8 Hooks



High-View Padlock Storage Cabinets 30 LC



High-View Padlock Storage Cabinets 48LC



Emergency Key Box Spare Glass



Select Access Wall Mounted Key Safe 5400D



Emergency Key Box Seals



Emergency Key Box Hammer



Select Access Wall Mounted Key Safe 5401D



Select Access Wall Mounted Key Safe 5403D



Select Access Wall Mounted Key Safe 5412D



# Sign & Tags

Safety signs are crucial in any work environment, offering immediate and clear communication about potential hazards and safety protocols.

They help ensure compliance with legal regulations and significantly contribute to preventing accidents and saving lives.

## Safety Warning Tag Customized PVC Tags Safety Lockout Tagout LT01 02 03

### Specification:

- Made from PVC material.
- Can be written by erasable pen.
- It can only be opened by the one who lock it.
- On tag, you can see “danger /Do not operate/Caution security warning language and also “name /department /date”etc blank for you to fill in.
- Other wording and design can be customized.







**LT01**  
Size:  
75mm(W)×146mm(H)×0.5mm(T)



**LT02**  
Size:  
75mm(W)×146mm(H)×0.5mm(T)



**LT03**  
Size:  
75mm(W)×146mm(H)×0.5mm(T)



Part No	Description
LT01	75mm(W)×146mm(H)×0.5mm(T)
LT02	75mm(W)×146mm(H)×0.5mm(T)
LT03	75mm(W)×146mm(H)×0.5mm(T)
LT22	85mm(W)×156mm(H)×0.5mm(T)



# Customized ID Tag PVC Company Lockout Tagout LT11

## Specification:

- Made from PVC.
- You can put any information you prefer to show on the tag, company name, personal photo, name, contact number or anything else necessary.
- This lockout ID tag is a very direct way to show the person who is in charge and his information.



Part No	Description
LT11	Size: 54mm×86mm



# Do Not Operate Safety Warning Tag LT22

## Specification:

- Made from paper with PVC coat.
- Can be written by erasable pen.
- Use with padlock to remind that the device has been lockout and can not be operated .It can only be opened by the one who lock it.
- On tag, you can see “danger /Do not operate/Caution security warning language and also “name /department /date”etc blank for you to fill in.
- Other wording and design can be customized.



Part No	Description
LT01	75mm(W)×146mm(H)×0.5mm(T)
LT02	75mm(W)×146mm(H)×0.5mm(T)
LT03	75mm(W)×146mm(H)×0.5mm(T)
LT22	85mm(W)×156mm(H)×0.5mm(T)

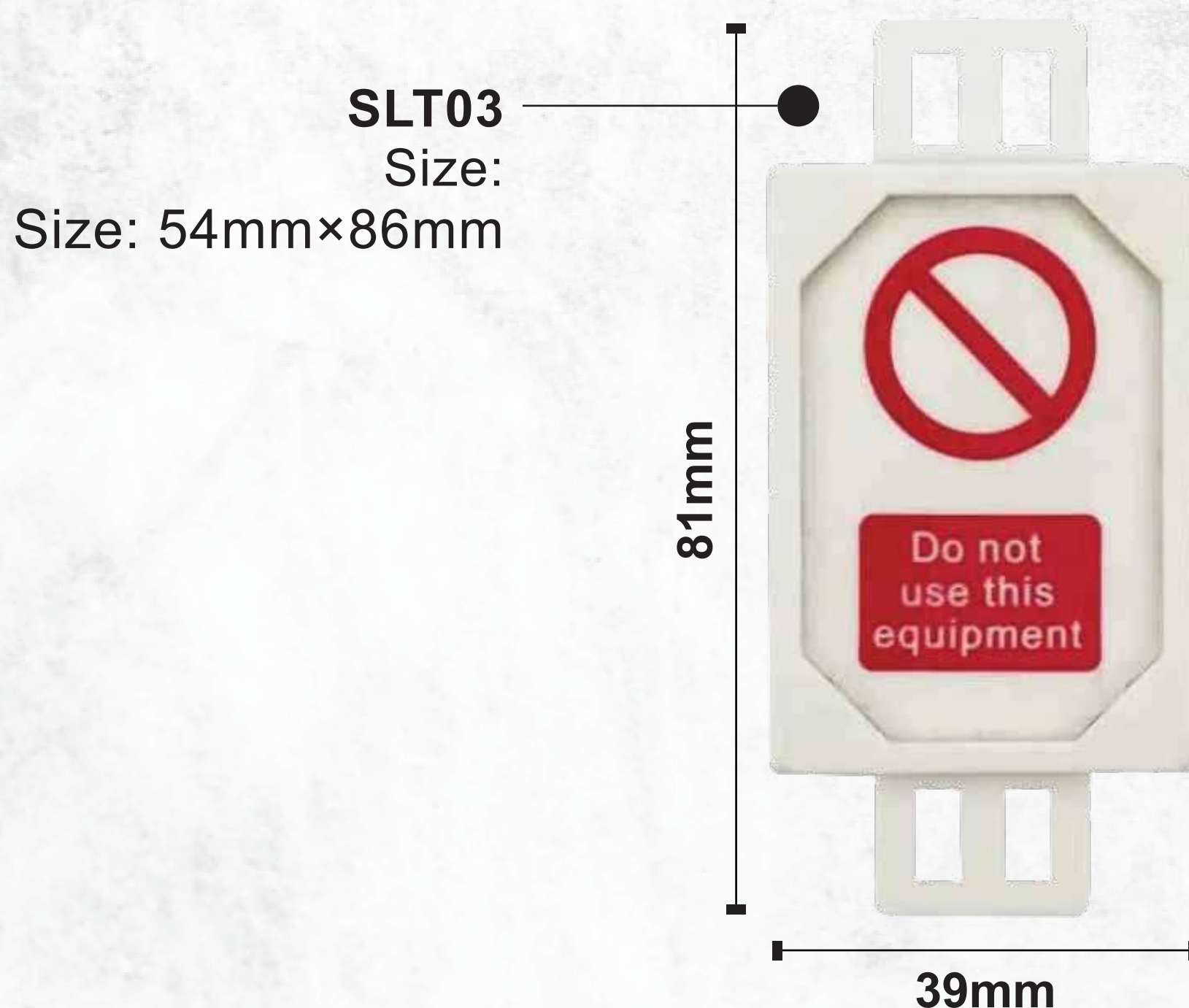


# High Quality Scaffold Holder Tag SLT03

## Specification:

- Made from ABS.
- Provides system, procedural and legal compliance for scaffolds on work sites.
- Provides a clear inspection trail giving integrity and control of work carried out.
- The tags are available in three durable write-on materials, providing highly visual and eye-catching information.
- Each with a scaffold tag holder and a tag.
- The tags can be customised.

Part No	Description
SLT03	Size: 54mm×86mm





# High Quality Scaffold Holder Tag SLT02

## Specification:

- Made from ABS.
- Provides system, procedural and legal compliance for scaffolds on work sites.
- Provides a clear inspection trail giving integrity and control of work carried out.
- The tags are available in three durable write-on materials, providing highly visual and eye-catching information.
- Each with a scaffold tag holder and a tag.
- The tags can be customized.

Part No	Description
SLT02	Size: 213mm×56mm





# Plastic Safety Scaffolding Holder tag SLT01

## Specification:

- The plastic scaffold tag holder is made from ABS, tag is made of PVC.
- Provides system, procedural and legal compliance for scaffolds on work sites.
- Provides a clear inspection trail giving integrity and control of work carried out.
- The tags are available in three durable write-on materials, providing highly visual and eye-catching information.
- Each with a scaffold tag holder and a tag.
- The tags can be customized.



Part No	Description
SLT01	Size: 310mm×92mm,Diameter:60mm



# Oversized Multi-Functional Scaffold Tag SLT04

## Specification:

- Made from ABS.
- Provides system, procedural and legal compliance for scaffolds on work sites.
- Do Not Use Equipment printed on the front.



Part No	Description
SLT04	Apply to all valid points

