



# Safety-Grip®

Safety-Grip™ - abrasive minerals applied to a self-adhesive carrier, for quick, durable application in many different conditions.

Developed in 1997 and still our most popular range. Available in many colours, including camouflage DPM.



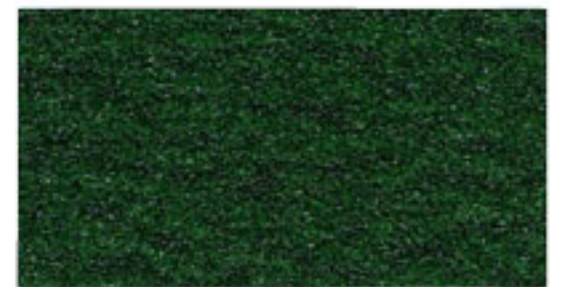
**H3401N • Safety-Grip®**  
Standard • Black



**H3401G • Safety-Grip®**  
Standard • Brown



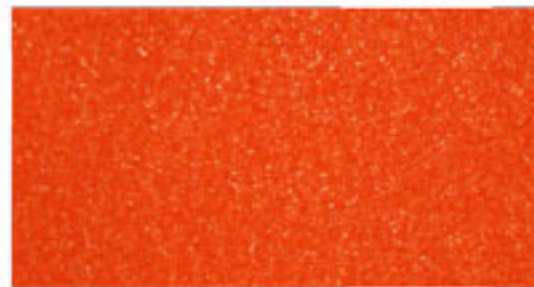
**H3401F • Safety-Grip®**  
Standard • Fluorescent Yellow



**H3401V • Safety-Grip®**  
Standard • Green



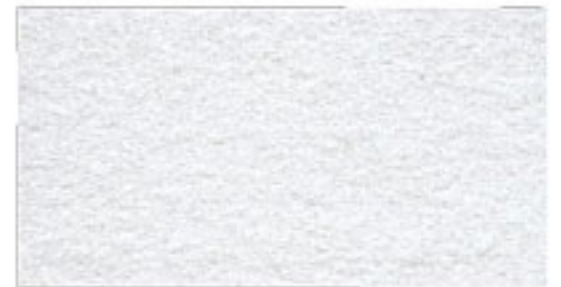
**H3401S • Safety-Grip®**  
Standard • Grey



**H3401O • Safety-Grip®**  
Standard • Orange



**H3401R • Safety-Grip®**  
Standard • Red



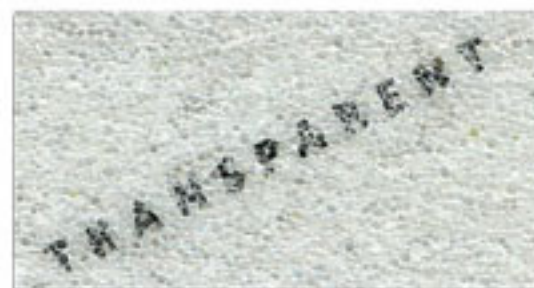
**H3401W • Safety-Grip®**  
Standard • White



**H3401Y • Safety-Grip®**  
Standard • Yellow



**H3401B • Safety-Grip®**  
Standard • Blue



**H3402T • Safety-Grip®**  
Coarse • Transparent



**H3401A • Safety-Grip®**  
Standard • Red/White



**H3401D • Safety-Grip®**  
Standard, Hazard Black/Yellow



**RAAH Safety**

UBI TECHPARK #04-09 (LOBBY A)  
10 UBI CRESCENT, SINGAPORE 408564

For further information or to order, call us:

**+65 6635 4520**

[www.raahsafety.com](http://www.raahsafety.com)





# Safety-Grip®

**Safety-Grip™** - abrasive minerals applied to a self-adhesive carrier, for quick, durable application in many different conditions. Developed in 1997 and still our most popular range.



**H3402N • Safety-Grip®**  
Coarse • Black



**H3402NUC**  
X-Coarse - Black



**H3402Y • Safety-Grip®**  
Coarse • Yellow

## Conformable

Whilst surfaces like Durbar plate, chequer plate and diamond tread appear to be slip resistant, they can be quite the opposite.

Additionally, the uneven surface makes adhesion difficult for most tapes as they 'lift' in an attempt to retain their flat shape.

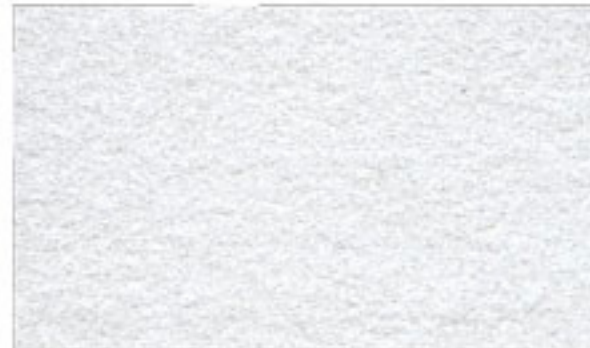
Conformable tape has no "memory" and so once it is pressed into place on uneven surfaces it remains in that shape and resists lifting.



**H3406N • Conformable**  
Black



**H3406O • Conformable**  
Orange



**H3406W • Conformable**  
White



**H3406Y • Conformable**  
Yellow



**H3406D • Conformable**  
Hazard



**RAAH Safety**

UBI TECHPARK #04-09 (LOBBY A)  
10 UBI CRESCENT, SINGAPORE 408564

For further information or to order, call us:

**+65 6635 4520**

[www.raahsafety.com](http://www.raahsafety.com)





# Safety-Grip®

## Photoluminescent - (Glow in the Dark)

Photoluminescent tape charges by absorbing artificial or natural light (approx. 2 hours). Once charged, photoluminescent tapes glow - even in complete darkness.

The glow in the dark materials used to manufacture our products are non-toxic, and free from any phosphorous or radioactive material. Photoluminescent tape is available in H3452 - Premium and H3454 - Super, these are DIN67510, OSHA 1910 and ASM2072 approved anti slip tapes.



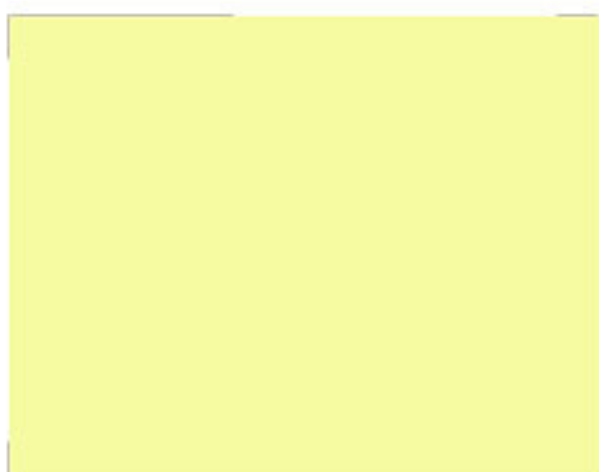
**H3403X**  
Photoluminescent



**H3403D • Hazard**  
Photoluminescent



**H3403N • Glow Line**  
Black / Photoluminescent



**H810I • Egress Tape**  
Photoluminescent



**H810ID • Egress Tape - Hazard**  
Photoluminescent/Black



**RAAH Safety**

UBI TECHPARK #04-09 (LOBBY A)  
10 UBI CRESCENT, SINGAPORE 408564

For further information or to order, call us:

**+65 6635 4520**

[www.raahsafety.com](http://www.raahsafety.com)



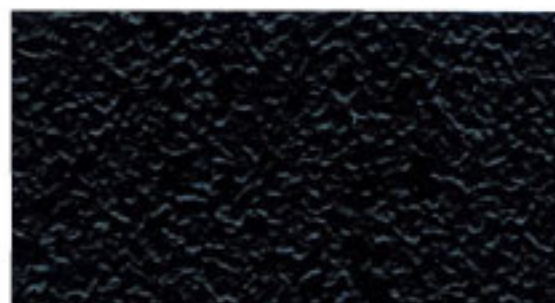


# Aqua-Safe & Marine

Aqua-safe is a non-abrasive tape which is used in situations where water is prevalent. It has no minerals or abrasive particles, which means it will not shed any particles. It is very easy to clean.



**H3405X • Aqua-Safe**  
Non Abrasive • Beige



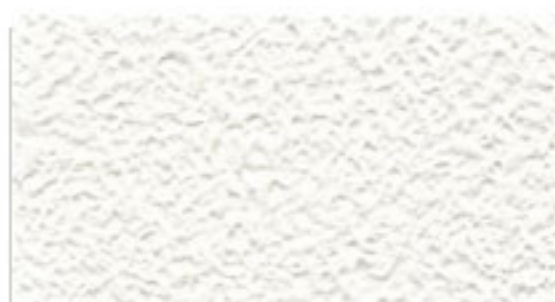
**H3405N • Aqua-Safe**  
Non Abrasive • Black



**H3405T • Aqua-Safe**  
Non Abrasive • Transparent



**H3405S • Aqua-Safe**  
Non Abrasive • Grey



**H3405W • Aqua-Safe**  
Non Abrasive • White

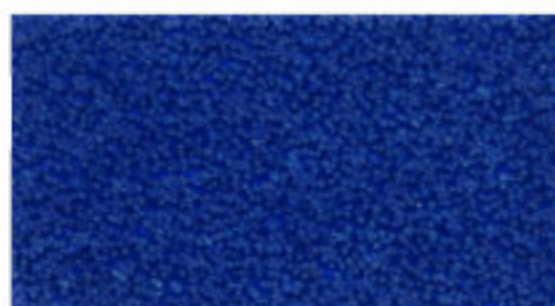
## Marine

H3460 Marine anti-slip tapes construction is that of granules applied to a surface. Unlike our abrasive products which have aluminium oxide applied on top, the grit on this is S2, to ensure

comfort when walking on it with bare feet, but will provide efficient slip resistance when used in stressed environments.



**H3460N • Marine**  
Non Abrasive • Black



**H3460B • Marine**  
Non Abrasive • Blue



**H3460S • Marine**  
Non Abrasive • Grey



**RAAH Safety**

UBI TECHPARK #04-09 (LOBBY A)  
10 UBI CRESCENT, SINGAPORE 408564

For further information or to order, call us:

**+65 6635 4520**

[www.raahsafety.com](http://www.raahsafety.com)





# Resilient

Resilient tape feels more like rubber than plastic, which makes it appealing to the touch and gives exceptional levels of grip. With similar properties to our Aqua-Safe product but with a higher

CoF figure which means that the chance of slipping is lower. To achieve this we changed the embossing pattern of the upper surface.



**H3408N • Resilient**  
Non Abrasive • Black



**H3408V • Resilient**  
Non Abrasive • Green



**H3408R • Resilient**  
Non Abrasive • Red



**H3408W • Resilient**  
Non Abrasive • White



**H3408Y • Resilient**  
Non Abrasive • Yellow



**H3415N • Coarse Resilient**  
Mk2 • Black



**H3415S • Coarse Resilient**  
Mk2 • Grey



**H3415W • Coarse Resilient**  
Mk2 • White



**H3415T • Coarse Resilient**  
MK2 - Transparent



**H3415Y • Coarse Resilient**  
Mk2 • Yellow



**H3450N • Coarse Resilient**  
Mk3 • Black



**H3450S Coarse Resilient**  
Mk3 • Grey



**H3450B • Coarse Resilient**  
Mk3 • Blue



**H3450T • Coarse Resilient**  
Mk3 • Transparent



**H3450W • Coarse Resilient**  
Mk3 • White



**H3451N • Coarse Resilient**  
Lean \*

\* Lean is a thinner version of H3450 Coarse Resilient Mark III



**RAAH Safety**  
UBI TECHPARK #04-09 (LOBBY A)  
10 UBI CRESCENT, SINGAPORE 408564

For further information or to order, call us:

**+65 6635 4520**  
[www.raahsafety.com](http://www.raahsafety.com)





# Additional Products

## Reflective

Glass bead engineering grade reflective tape



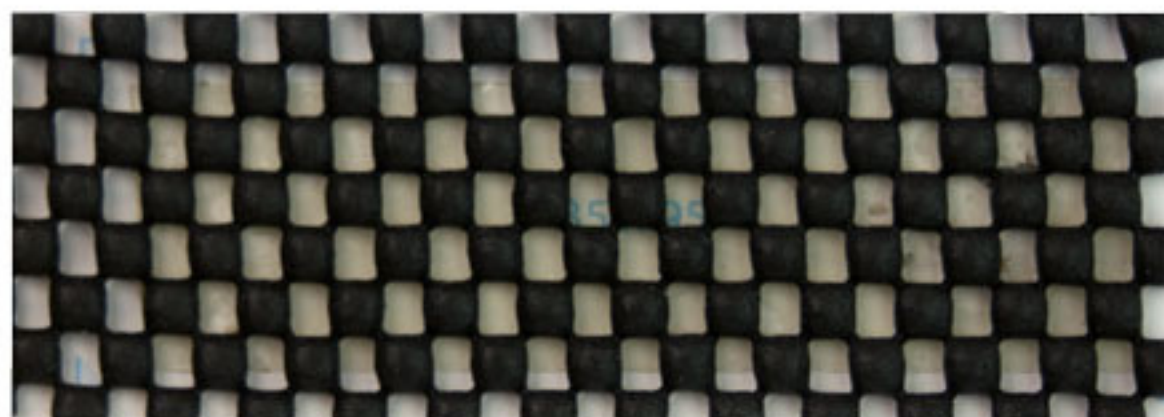
### H6601Y • Reflective

Blue, Green, Orange, Red, Red/White, Silver (White), Yellow, Hazard



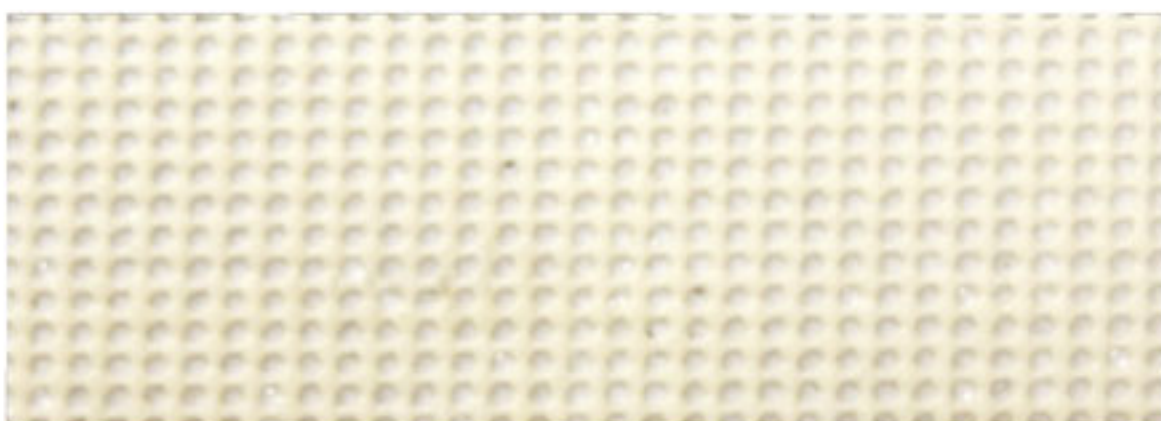
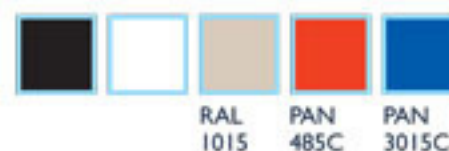
## Tenura Fabric

Tenura fabric is a thick non-slip fabric with a multitude of uses, it is normally supplied non-adhesive and can be supplied in a retail pack



### Tenura Fabric - T-NET BLACK

Black, White, Beige, Red, Blue



### H4644W

White

Very versatile and a superb non-slip fabric also produced in a non-adhesive format (H4643), available in rolls or sheets.



### H3418N • Handrail Grip Tape

Black

Designed to provide grip for hands on handrails, can be produced to any dimension, also provides protection to help prevent bare hands freezing onto metal rails.



### H3435 • Ribbed toolbox drawer liner

Black

Looks like rubber, it is excellent for using as a lining for tool boxes as the raised ribs allow any debris and excess to fall away from your tools.



### H3408S • Cushion Grip

Grey

Cushion Grip tape is produced using PU. One of the many benefits of PU is that it provides high levels of cushioning; PU has a different construction from other plastics which we utilise.