

5

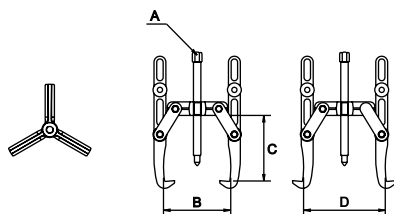
EXTRACTORES
GEAR PULLERS
EXTRACTEURS
ABZIEHERS
ESTRATTORI
EXTRACTORES
СЪЕМНИКИ



05

EXTRACTORES
GEAR PULLERS
EXTRACTEURS
ABZIEHERS
ESTRATTORI
EXTRACTORES
СЪЕМНИКИ

EXTRACTOR 3 GARRAS ARTICULADAS 2 POSICIONES / 3 JAW GEAR PULLER 2 POSITION / EXTRACTEUR 3 BRAS ARTICULÉS 2 POSITIONS / AUSSEN-INNENABZIEHER 3 KLAUEN 2 POSITIONEN / ESTRATTORE A 3 BRACCIA 2 POSIZIONI / EXTRACTOR DE 3 GARRAS ARTICULADAS 2 POSIÇÕES / СЪЕМНИК С 3-МЯ ЛАПАМИ И 2-МЯ ПОЗИЦИЯМИ

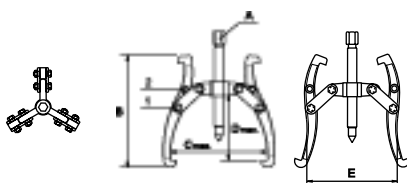


| COD. | O.D. inch | A mm | B (mm) | C (mm) | D (mm) | Kg | Max. Tn * |
|-------|-----------|------|--------|--------|---------|-----|-----------|
| 62576 | 4 | 14 | 20-120 | 110 | 60-150 | 0,7 | 2,5 |
| 62577 | 6 | 17 | 20-165 | 150 | 60-200 | 1,1 | 3,5 |
| 62578 | 9 | 19 | 36-230 | 210 | 90-280 | 2,7 | 7 |
| 62579 | 12 | 24 | 50-320 | 250 | 115-350 | 5,5 | 10 |
| 62580 | 16 | | 80-420 | 350 | 125-420 | 8,0 | 12 |

*Máxima fuerza de extracción / Maximum pulling force / Force maximale d'extraction



EXTRACTOR 3 GARRAS ARTICULADAS REVERSIBLES 2 POSICIONES / 3 JAW REVERSIBLE GEAR PULLER 2 POSITION / EXTRACTEUR 3 BRAS ARTICULES RÉVERSIBLES 2 POSITIONS / AUSSENABZIEHER 3 KLAUEN 2 POSITIONEN / ESTRATTORE A 3 BRACCI REVERSIBILI 2 POSIZIONI / EXTRACTOR DE 3 GARRAS ARTICULADO REVERSIVEL 2 POSIÇÕES / СЪЕМНИК С 3-МЯ ЛАПАМИ РЕВЕРСИВНЫЙ 2-МЯ ПОЗИЦИЯМИ

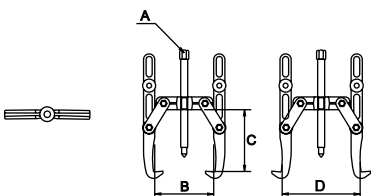


| COD. | O.D. inch | A (mm) | B (mm) | C (mm) max. (1) | C (mm) max. (2) | D (mm) max. (1) | D (mm) max. (2) | E (mm) max. (2) | E (mm) max. (1) | Kg | Max. Tn * |
|-------|-----------|--------|--------|-----------------|-----------------|-----------------|-----------------|-----------------|-----------------|-----|-----------|
| 62572 | 3 | 12 | 102 | 15 | 80 | 56 | 7 | 40-92 | - | 0,4 | 1,5 |
| 62573 | 6 | 17 | 184 | 25 | 160 | 94 | 123 | 60-180 | 60-202 | 1,1 | 5 |
| 62574 | 8 | 21 | 236 | 30 | 210 | 125,5 | 162,5 | 76-235 | 76-350 | 2,2 | 7 |
| 62575 | 12 | 28 | 340 | 50 | 317 | 179 | 228 | 102-350 | 102-380 | 6,5 | 10 |

*Máxima fuerza de extracción / Maximum pulling force / Force maximale d'extraction



EXTRACTOR 2 GARRAS ARTICULADAS 2 POSICIONES / 2 JAW GEAR PULLER 2 POSITION / EXTRACTEUR 2 BRAS ARTICULES 2 POSITIONS / AUSSEN-INNENABZIEHER 2 KLAUEN / ESTRATTORE ARTICULATE A 2 BRACCIA 2 POSIZIONI / EXTRACTOR DE 2 GARRAS ARTICULADAS 2 POSIÇÕES / СЪЕМНИК С 2-МЯ ЛАПАМИ И 2-МЯ ПОЗИЦИЯМИ



| COD. | O.D. inch | A mm | B (mm) | C (mm) | D (mm) | Kg | Max. Tn * |
|-------|-----------|------|--------|--------|---------|-----|-----------|
| 62581 | 4 | 14 | 20-120 | 110 | 60-150 | 0,5 | 3,5 |
| 62582 | 6 | 15 | 20-165 | 150 | 60-200 | 0,8 | 5 |
| 62583 | 9 | 17 | 36-230 | 210 | 90-280 | 2,0 | 7 |
| 62584 | 12 | | 50-320 | 250 | 115-350 | 4,0 | 10 |
| 62585 | 16 | 26 | 80-420 | 350 | 125-420 | 5,8 | |

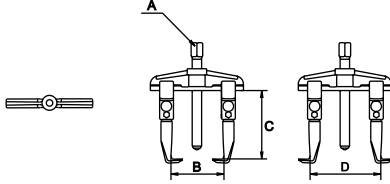
*Máxima fuerza de extracción / Maximum pulling force / Force maximale d'extraction



05

EXTRACTORES
GEAR PULLERS
EXTRACTEURS
ABZIEHERS
ESTRATTORI
EXTRACTORES
СЪЕМНИКИ

EXTRACTOR 2 GARRAS UNIVERSAL / UNIVERSAL 2 JAW GEAR PULLER / EXTRACTEUR DEUX BRAS UNIVERSEL / UNIVERSELLE AUSZIEHER 2 KLAUEN / ESTRATTORE UNIVERSALE A 2 BRACCIA / EXTRACTOR DE DUAS GARRAS UNIVERSAL / УНИВЕРСАЛЬНЫЙ СЪЕМНИК С 2-МЯ ЛАПАМИ

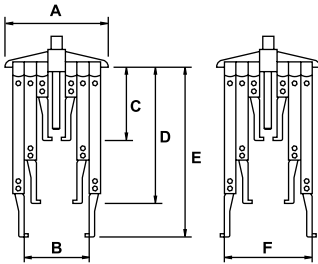


| COD. | O.D. inch | A mm | B (mm) | C (mm) | D (mm) | Kg | Max. Tn * |
|-------|-----------|------|--------|--------|---------|-----|-----------|
| 62586 | 3 | 17 | 25-80 | 100 | 70-130 | 1,0 | 2,5 |
| 62587 | 5 | | 25-130 | | 80-180 | 1,2 | |
| 62588 | 6 | 23 | 50-160 | 150 | 105-220 | 2,7 | 4,5 |
| 62589 | 7 | 25 | 60-200 | | 120-270 | 3,1 | 6 |
| 62590 | 9 | 27 | 80-250 | 200 | 160-330 | 6,5 | 7 |

*Máxima fuerza de extracción / Maximum pulling force / Force maximale d'extraction



EXTRACTOR 6 GARRAS UNIVERSAL / UNIVERSAL 6 JAW GEAR PULLER / EXTRACTEUR 6 BRAS UNIVERSEL / UNIVERSELLE AUSZIEHER 6 KLAUEN / ESTRATTORE UNIVERSALE A 6 BRACCIA / EXTRACTOR DE 6 GARRAS UNIVERSAL / УНИВЕРСАЛЬНЫЙ СЪЕМНИК С 6-МЯ ЛАПАМИ

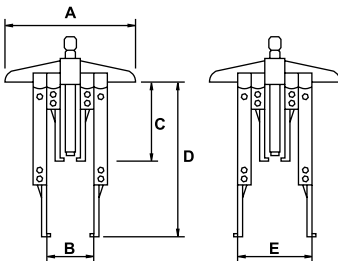


| COD. | O.D. inch | AF mm | A (mm) | B (mm) | C (mm) | D (mm) | E (mm) | F (mm) | Kg | Max. Tn * |
|-------|-----------|-------|--------|--------|--------|--------|--------|--------|----|-----------|
| 62801 | 5 | 17 | 175 | 30-130 | 100 | 200 | 250 | 80-180 | 3 | 3,5 |

*Máxima fuerza de extracción / Maximum pulling force / Force maximale d'extraction



EXTRACTOR 4 GARRAS UNIVERSAL / UNIVERSAL 4 JAW GEAR PULLER / EXTRACTEUR 4 BRAS UNIVERSEL / UNIVERSELLE AUSZIEHER 4 KLAUEN / ESTRATTORE UNIVERSALE A 4 BRACCIA / EXTRACTOR DE 4 GARRAS UNIVERSAL / УНИВЕРСАЛЬНЫЙ СЪЕМНИК С 4-МЯ ЛАПАМИ



| COD. | O.D. inch | AF mm | A (mm) | B (mm) | C (mm) | D (mm) | E (mm) | Kg | Max. Tn * |
|-------|-----------|-------|--------|--------|--------|--------|---------|-----|-----------|
| 62802 | 7 | 22 | 260 | 45-210 | 155 | 305 | 120-270 | 5,6 | 2,5 |

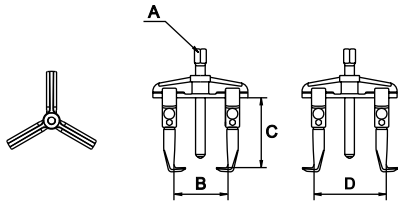
*Máxima fuerza de extracción / Maximum pulling force / Force maximale d'extraction



05

EXTRACTORES
GEAR PULLERS
EXTRACTEURS
ABZIEHERS
ESTRATTORI
EXTRACTORES
СЪЕМНИКИ

EXTRACTOR 3 GARRAS UNIVERSAL / UNIVERSAL 3 JAW GEAR PULLER / EXTRACTEUR 3 BRAS UNIVERSEL / UNIVERSELLE AUSZIEHER 3 KLAUEN / ESTRATTORE UNIVERSALE A 3 BRACCIA / EXTRACTOR DE 3 GARRAS UNIVERSAL / УНИВЕРСАЛЬНЫЙ СЪЕМНИК С 3-МЯ ЛАПАМИ

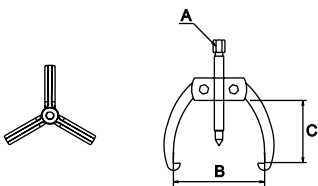


| COD. | O.D. inch | A mm | B (mm) | C (mm) | D (mm) | Kg | Icon | Max. Tn * |
|-------|-----------|------|--------|--------|---------|-----|------|-----------|
| 62828 | 5 | 17 | 25-130 | 100 | 80-180 | 1,5 | 1 | 4 |
| 62829 | 8 | 22 | 60-200 | 150 | 120-270 | 4,0 | 1 | 6 |

*Máxima fuerza de extracción / Maximum pulling force / Force maximale d'extraction



EXTRACTOR 3 GARRAS / 3 JAW GEAR PULLER / EXTRACTEUR 3 BRAS / AUSZIEHER 3 KLAUEN / ESTRATTORE A 3 BRACCIA / EXTRACTOR DE 3 GARRAS / СЪЕМНИК С 3-МЯ ЛАПАМИ

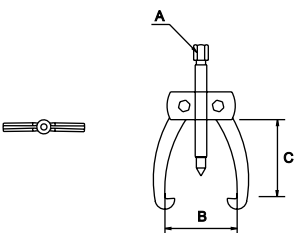


| COD. | O.D. inch | A mm | B (mm) | C (mm) | Kg | Icon | Max. Tn * |
|-------|-----------|------|--------|--------|-----|------|-----------|
| 62816 | 4 | 14 | 20-110 | 110 | 1,3 | 1 | 3 |
| 62817 | 6 | 19 | 25-160 | 140 | 2,6 | 1 | 5 |

*Máxima fuerza de extracción / Maximum pulling force / Force maximale d'extraction



EXTRACTOR 2 GARRAS / 2 JAW GEAR PULLER / EXTRACTEUR 2 BRAS / AUSZIEHER 2 KLAUEN / ESTRATTORE A 2 BRACCIA / EXTRACTOR DE DUAS GARRAS / СЪЕМНИК С 2-МЯ ЛАПАМИ



| COD. | O.D. inch | A mm | B (mm) | C (mm) | Kg | Icon | Max. Tn * |
|-------|-----------|------|--------|--------|-----|------|-----------|
| 62818 | 4 | 14 | 20-110 | 110 | 1,0 | 1 | 2 |
| 62819 | 6 | 19 | 25-160 | 140 | 2,0 | 1 | 4 |

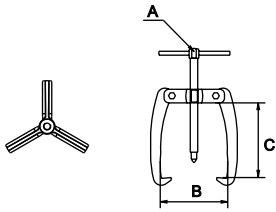
*Máxima fuerza de extracción / Maximum pulling force / Force maximale d'extraction



05

EXTRACTORES
GEAR PULLERS
EXTRACTEURS
ABZIEHERS
ESTRATTORI
EXTRACTORES
СЪЕМНИКИ

EXTRACTOR 3 GARRAS LIGERO / 3 JAW LIGHT GEAR PULLER / EXTRACTEURS 3 BRAS LÉGER / AUSZIEHER 3 KLAUEN / ESTRATTORE A 3 BRACCIA LEGGERA / EXTRACTOR DE TRÊS GARRAS LIGEIRO / СЪЕМНИК С 3-МЯ ЛАПАМИ ОБЛЕГЧЕННЫЙ

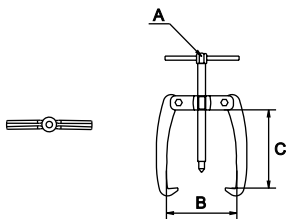


| COD. | O.D. inch | A mm | B (mm) | C (mm) | Kg | Max. Tn * |
|-------|-----------|------|--------|--------|-----|-----------|
| 62821 | 2 | | 15-60 | 50 | 0,2 | |
| 62822 | 2.3/4 | 12 | 15-70 | 70 | 0,3 | 1 |
| 62823 | 3.1/4 | | 15-80 | 80 | | |

*Máxima fuerza de extracción / Maximum pulling force / Force maximale d'extraction



EXTRACTOR 2 GARRAS LIGERO / 2 JAW LIGHT GEAR PULLER / EXTRACTEURS 2 BRAS LÉGER / AUSZIEHER 2 KLAUEN / ESTRATTORE A 2 BRACCIA LEGGERA / EXTRACTOR DE DUAS GARRAS LIGEIRO / СЪЕМНИК С 2-МЯ ЛАПАМИ ОБЛЕГЧЕННЫЙ

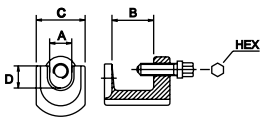


| COD. | O.D. inch | A mm | B (mm) | C (mm) | Kg | Max. Tn * |
|-------|-----------|------|--------|--------|-----|-----------|
| 62824 | 2 | | 15-60 | 50 | 0,2 | |
| 62825 | 2.3/4 | 12 | 15-70 | 70 | 0,3 | 1 |
| 62826 | 3.1/4 | | 15-80 | 80 | | |

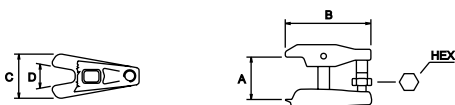
*Máxima fuerza de extracción / Maximum pulling force / Force maximale d'extraction



EXTRACTOR DE RÓTULAS / BALL JOINT PULLER / EXTRACTEUR DE ROUEMENTS / KUGELGELENKABZIEHER / ESTRATTORE A SFERE / EXTRACTOR DE RÓTULAS / СЪЕМНИК



| COD. | AF mm | A (mm) | B (mm) | C (mm) | D (mm) | Kg | Max. Tn * |
|-------|-------|--------|--------|--------|--------|-----|-----------|
| 62831 | 18 | 19 | 55 | 44 | 21 | 0,8 | 1 |

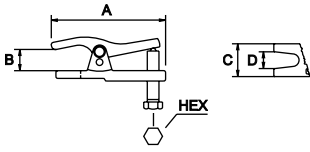


| COD. | AF mm | A (mm) | B (mm) | C (mm) | D (mm) | Kg | Max. Tn * |
|-------|-------|--------|--------|--------|--------|-----|-----------|
| 62832 | 19 | 50 | 100 | 56 | 18-22 | 0,7 | 1 |



05

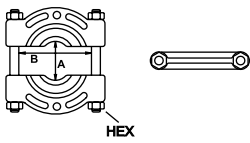
**EXTRACTORES
GEAR PULLERS
EXTRACTEURS
ABZIEHERS
ESTRATTORI
EXTRACTORES
СЪЕМНИКИ**



| COD. | AF mm | A (mm) | B (mm) | C (mm) | D (mm) | Kg | Icon |
|-------|-------|--------|--------|--------|--------|-----|------|
| 62833 | 24 | 160 | 12-50 | 47 | 20 | 1,2 | 1 |
| 62834 | 17 | 160 | 60-80 | 47 | 20 | 1,5 | 1 |



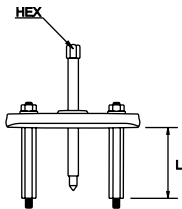
GUILLOTINA PARA RODAMIENTOS Y POLEAS / BEARING SEPARATOR / GUILLOTINE POUR ROUEMENTS ET POULIES / TRENNVORRICHTUNG FÜR KUGELGELENKE / SEPARATORE DI CUSCINETTI E PULEGGE / GUILHOTINA PARA ROLAMENTOS E POLIS / СЕПАРАТОР ПОДШИПНИКОВ



| COD. | AF mm | O.D. inch | A (mm) | B (mm) | Kg | Icon |
|-------|-------|-----------|--------|--------|------|------|
| 62836 | 17 | 2 | 30-50 | 61 | 0,65 | 1 |
| 62837 | 19 | 3 | 50-75 | 92 | 1,5 | 1 |
| 62838 | 24 | 4 | 75-105 | 110 | 1,7 | 1 |



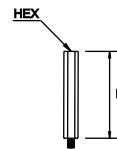
EXTRACTORES PARA GUILLOTINAS / PULLERS FOR BEARING SEPARATOR / EXTRACTEURS POUR GUILLOTINES / AUSZIEHER FÜR TRENNVORRICHTUNG / ESTRATTORI DA TAGLIO / EXTRACTOR PARA GUILHOTINAS / СЪМНИК ДЛЯ СЕПАРАТОРА



| COD. | Válido para / Valid for / Valable pour | L (mm) | AF mm | Kg | Icon |
|-------|--|--------|-------|-----|------|
| 62840 | 62836 | 75 | 14 | 0,9 | 1 |
| 62841 | 62837 | 100 | 17 | 1,0 | 1 |
| 62842 | 62838 | 220 | 19 | 3,0 | 1 |



PROLONGACIONES PARA EXTRACTORES PARA GUILLOTINAS / EXTENSIONS FOR BEARING SEPARATOR PULLERS / PROLONGATEURS POUR EXTRACTEURS PAR GUILLOTINE / VELÄNGERUNGEN FÜR AUSZIEHER FÜR TRENNVORRICHTUNG / PROLUNGA PER ESTRATTORE PER GUILHOTINA / PROLONGADORES PARA EXTRACTORES PARA GUILHOTINAS / УДЛИНИТЕЛЬ ДЛЯ СЕПАРАТОРА ПОДШИПНИКОВ



| COD. | Válido para / Valid for / Valable pour | L (mm) | AF mm | Kg | Icon |
|-------|--|--------|-------|-----|------|
| 62844 | 62836 | 90 | 14 | 0,2 | 12 |
| 62845 | 62837 | 115 | 17 | 0,4 | 12 |
| 62846 | 62838 | 220 | 19 | 0,5 | 6 |



SET



| COD. | O.D. inch | Kg |
|-------|-----------|-----|
| 62883 | 2-3 | 5,6 |