

Product Features and Specifications

FA7Ti Infinity Series Winch - Capacity: 12,600 lbs (5727 kg)

PFS-FA7Ti-09072010

Rugged Compact and Versatile Design

- Meets ANSI / ASME B30.7
- 5:1 design factor at rated load
- Top layer rated line pull
- "Lift to shift" winch mounted lever throttle
- Minimum 18:1 drum diameter to wire rope diameter ratio
- Compact gearbox-in-drum design
- Standard design temperature range is 0°C through 60°C
- Group of mechanism as per FEM: 5m
- Pre-certified lifting lugs

Suitable for Hazardous Explosion Proof Environments

- Flameproof by design. Air motors (unlike electric motors) are inherently spark resistant.
- ATEX classification (as per directive EC 94/9/EEC). CE compliant models marked EX II 2 GD c 200°C X

Powerful Radial Piston Air Motor

- Positive starting torque
- Infinitely variable speeds with precision spotting control
- Superior reliability in harsh environments

Brake Systems

- Manual drum brake standard
- Optional auto drum brake and /or auto disc available
- Fully enclosed automatic oil bath "wet" disc brake sealed against moisture and contaminants
- **Ingersoll Rand recommends the use of automatic brakes whenever a winch is used for lifting**

CE compliant versions provided with:

- Drum guard
- Overload protection (preset regulator)
- Emergency stop
- Muffler
- Automatic brake
- Limit switches
- CE documentation



FA7Ti with optional Auto Disc Brake and Accuspool Level Wind

Options and Accessories

- DNV & ABS Type Approved models available
- Low temperature versions
- Overload and E-stop control system
- Remote controls
- Limit switches
- Tensioning manifold
- Drum guards*
- Grooved drums
- Drum divider flanges
- Drum locks
- Spooling devices
- Marine paint systems
- Air line accessories

* **Ingersoll Rand recommends using Drum Guards with all winches to prevent inadvertent contact with winch moving parts**



Head office- Singapore
UBI TECHPARK #07-19 (LOBBY B)
10 UBI CRESCENT, SINGAPORE 408564
T: +65 6635 4520 F: +65 6635 4527

Branch Office-Indonesia
Ruko Sentra Menteng MN/ 49
Bintaro Jaya Sektor 7,
Tangerang Selatan 15224 Jakarta

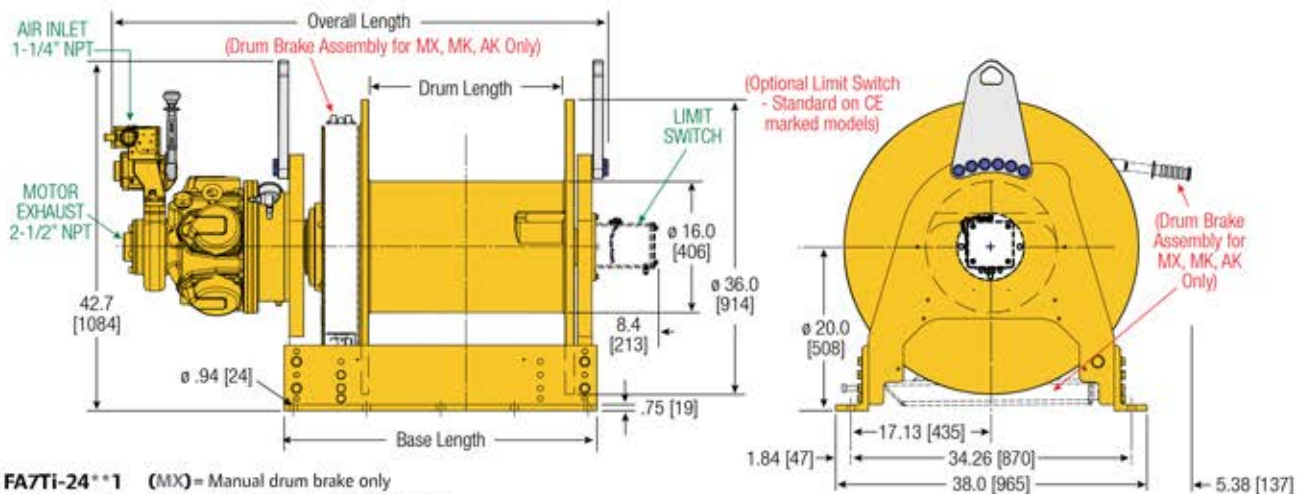
Branch Office-India
G15-, Sacred World,
Vitthal Rao Shivarkar Road,
Wanwadi, Pune,
Maharashtra 411040, India

Branch Office-USA
2860 Ogletown Road, Newark,
DE 19713, United States

Product Features and Specifications

FA7Ti Infinity Series Winch - Capacity: 12,600 lbs (5727 kg)

PFS-FA7Ti-09072010

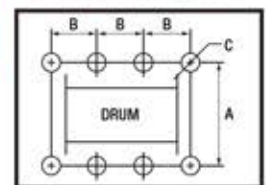


Dimensions shown are inches.
 Dimensions in Brackets [] are mm.
 Dimensions are subject to change.
 Contact factory for certified drawings.

Dimensions: FA7Ti and Bolt Down Pattern

	Drum Length 24" [610 mm]			Drum Length 36" [914 mm]		
	Drum & Disc Brakes (MK & AK)	Disc Brake Only (XX)	Drum Brake Only (MX)	Drum & Disc Brakes (MK & AK)	Disc Brake Only (XX)	Drum Brake Only (MX)
Overall Length	60.8	57.4	57.8	72.8	69.4	69.8
Base Length	38.19	34.63	38.19	50.19	46.63	50.19
'A'	34.25	34.25	34.25	34.25	34.25	34.25
'B'	9.0	8.0	9.0	11.0	8.5	11.0
'C'	0.94	0.94	0.94	0.94	0.94	0.94
Total # Holes	10	10	10	10	12	10

Bolt Down Pattern



'C' = Bolt Hole Inside Diameter

Lift Ratings at 5:1 Design Factor (Performance at 6.3 Bar - 90 PSI at air inlet when winch is operating)

Model #	Top Layer		First Layer		Average Air Consumption ⁽¹⁾	Sound Level ⁽²⁾	Inlet Size	Exhaust Size	Net Weight
	Rated Capacity	Speed	Rated Capacity	Stall Pull					
FA7Ti	25.2 hp	12,600 lbs / 5727 kg	48 ft/min / 15 m/min	38 ft/min / 12 m/min	750 F ³ /min / 21 m ³ /min	97 db(A)	1-1/4" NPT	2-1/2" NPT	2,335 lbs / 1059 kg

(1) Average Air Consumption is at rated load and speed at top layer (2) With optional muffler

Drum Wire Rope Storage Capacity - Imperial - Utility

Series	Rated capacity lbs	Rope Diameter in	Min Req Break Strength* lbs	Accumulated rope capacity in feet / number of layers													
				1	2	3	4	5	6	7	8	9	10	11	12	13	14
FA7Ti-24	12,600	3/4	63,000	136	283	442	613	795	989	1,194	1,411	1,640	1,880	2,131	2,394	2,669	2,955
		7/8	63,000	117	245	385	536	699	873	1,059	1,256	1,465	1,685	1,917	2,160		
FA7Ti-36	12,600	3/4	63,000	206	430	671	930	1,206	1,500	1,811	2,140	2,486	2,850	3,231	3,630	4,047	4,481
		7/8	63,000	177	372	584	814	1,061	1,326	1,608	1,908	2,225	2,560	2,912	3,281		

Drum Wire Rope Storage Capacity - Metric - Utility

Series	Rated capacity kg	Rope Diameter mm	Min Req Break Strength* kg	Accumulated rope capacity in meters / number of layers													
				1	2	3	4	5	6	7	8	9	10	11	12	13	14
FA7Ti-24	5727	22	28576	35	74	116	162	211	263	320	379	443	509	579			
		25	28576	31	66	104	146	191	240	292	347	406	469				
FA7Ti-36	5727	22	28576	53	112	176	246	320	400	486	576	672	774	880			
		25	28576	48	100	158	222	290	365	444	529	618	714				

* Note: The Minimum Required Breaking Strength for the wire rope needs to be the Rated Capacity multiplied by the Design Factor.
 Example: for the FA7Ti-24 (with a 5:1 Design Factor) 12,600 x 5 = 63,000 lbs.



Email us at:
 sales@raahinternational.com

Head office- Singapore
 UBI TECHPARK #07-19 (LOBBY B)
 10 UBI CRESCENT, SINGAPORE 408564
 T: +65 6635 4520 F: +65 6635 4527

Branch Office-Indonesia
 Ruko Sentra Menteng MN/ 49
 Bintaro Jaya Sektor 7,
 Tangerang Selatan 15224 Jakarta

Branch Office-India
 G15-, Sacred World,
 Vitthal Rao Shivarkar Road,
 Wanwadi, Pune,
 Maharashtra 411040, India

Branch Office-USA
 2860 Ogletown Road, Newark,
 DE 19713, United States