

FA5Ti Infinity Series Winch - Capacity: 8,400 lbs (3818 kg)

PFS-FASTI-09072010

Rugged Compact and Versatile Design

- Meets ANSI / ASME B30.7
- 5:1 design factor at rated load
- Top layer rated line pull
- "Lift to shift" winch mounted lever throttle
- Minimum 18:1 drum diameter to wire rope diameter ratio
- Compact gearbox-in-drum design
- Standard design temperature range is 0°C through 60°C
- Group of mechanism as per FEM: 5m
- Pre-certified lifting lugs

Suitable for Hazardous Explosion Proof Environments

- Flameproof by design. Air motors (unlike electric motors) are inherently spark resistant.
- ATEX classification (as per directive EC 94/9/EEC). CE compliant models marked EX II 2 GD c 200°C X

Powerful Radial Piston Air Motor

- Positive starting torque
- Infinitely variable speeds with precision spotting control
- Superior reliability in harsh environments

Brake Systems

- Manual drum brake standard
- Optional auto drum brake and /or auto disc available
- Fully enclosed automatic oil bath "wet" disc brake sealed against moisture and contaminants

CE compliant versions provided with:

- Drum guard
- Overload protection (preset regulator)
- Emergency stop
- Muffler
- Automatic brake
- Limit switches
- CE documentation



Options and Accessories

- DNV & ABS Type Approved models available
- Low temperature versions
- Overload and E-stop control system
- Remote controls
- Limit switches
- Tensioning manifold
- Drum guards*
- Grooved drums
- Drum divider flanges
- Drum locks
- Spooling devices
- Marine paint systems
- Air line accessories



Head office- Singapore
UBI TECHPARK #07-19 (LOBBY B)
10 UBI CRESCENT, SINGAPORE 408564
T: +65 6635 4520 F: +65 6635 4527

Branch Office-Indonesia
Ruko Sentra Menteng MN/ 49
Bintaro Jaya Sektor 7,
Tangerang Selatan 15224 Jakarta

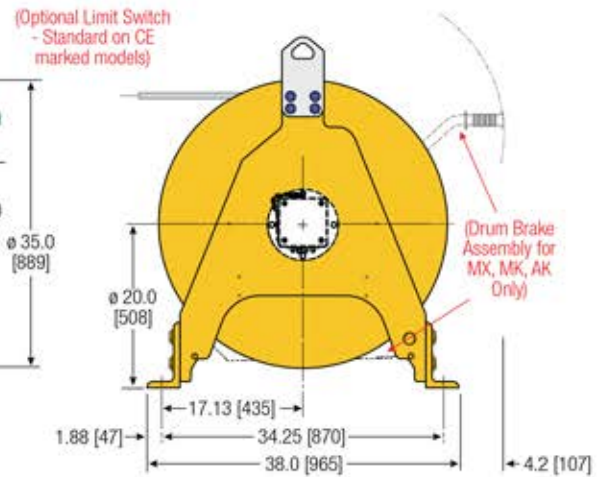
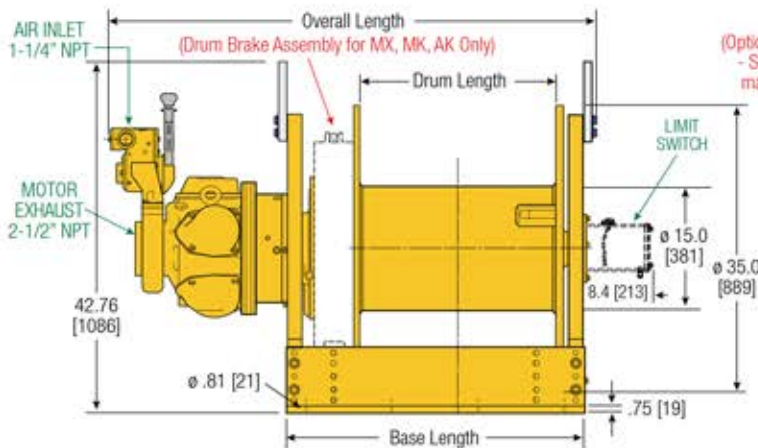
Branch Office-India
G15-, Sacred World,
Vitthal Rao Shivarkar Road,
Wanwadi, Pune,
Maharashtra 411040, India

Branch Office-USA
2860 Ogletown Road, Newark,
DE 19713, United States

Product Features and Specifications

FASTi Infinity Series Winch - Capacity: 8,400 lbs (3818 kg)

PFS-FASTi-09072010



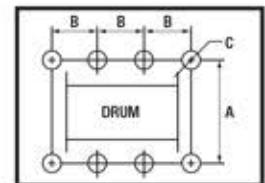
FASTi-16**1 (MX) = Manual drum brake only
 FASTi-24**1 (MK) = Manual drum & auto disc brakes
 (AK) = Automatic drum & auto disc brake
 (XK) = Disc brake only

Dimensions shown are inches.
 Dimensions in Brackets [] are mm.
 Dimensions are subject to change.
 Contact factory for certified drawings.

Dimensions: FASTi and Bolt Down Pattern

| | Drum Length 16" [406 mm] | | | Drum Length 24" [610 mm] | | |
|----------------|------------------------------|----------------------|----------------------|------------------------------|----------------------|----------------------|
| | Drum & Disc Brakes (MK & AK) | Disc Brake Only (XK) | Drum Brake Only (MX) | Drum & Disc Brakes (MK & AK) | Disc Brake Only (XK) | Drum Brake Only (MX) |
| Overall Length | 51.6 | 1311 | 47.4 | 1204 | 48.6 | 1234 |
| Base Length | 28.34 | 720 | 23.84 | 605 | 28.34 | 720 |
| 'A' | 31.25 | 794 | 31.25 | 794 | 31.25 | 794 |
| 'B' | 9.0 | 229 | 6.25 | 159 | 9.0 | 229 |
| 'C' | 0.81 | 21 | 0.81 | 21 | 0.81 | 21 |
| Total # Holes | 6 | 6 | 6 | 8 | 8 | 8 |

Bolt Down Pattern



'C' = Bolt Hole Inside Diameter

Lift Ratings at 5:1 Design Factor (Performance at 6.3 Bar - 90 PSI at air inlet when winch is operating)

| Model # | Top Layer | | First Layer | | Average Air Consumption ⁽¹⁾ | Sound Level ⁽²⁾ | Inlet Size | Exhaust Size | Net Weight | |
|---------|----------------|---------------------|----------------------|----------------------|--------------------------------------------------|----------------------------|------------|--------------|------------|--------|
| | Rated Capacity | Speed | Rated Capacity | Stall Pull | | | | | lbs | kg |
| FASTi | 25.2 hp | 8,400 lbs / 3818 kg | 70 ft/min / 21 m/min | 57 ft/min / 17 m/min | 700 f ³ /min / 20 m ³ /min | 97 db(A) | 1-1/4" NPT | 2-1/2" NPT | 2,153 lbs | 977 kg |

(1) Average Air Consumption is at rated load and speed at top layer (2) With optional muffler

Drum Wire Rope Storage Capacity - Imperial - Utility

| Series | Rated capacity lbs | Rope Diameter in | Min Req Break Strength* lbs | Accumulated rope capacity in feet / number of layers | | | | | | | | | | | | | |
|----------|--------------------|------------------|-----------------------------|------------------------------------------------------|-----|-----|-----|-----|-----|-------|-------|-------|-------|-------|-------|-------|-------|
| | | | | 1 | 2 | 3 | 4 | 5 | 6 | 7 | 8 | 9 | 10 | 11 | 12 | 13 | 14 |
| FASTi-16 | 8,400 | 3/4 | 42,000 | 84 | 175 | 274 | 381 | 495 | 617 | 746 | 883 | 1,028 | 1,180 | 1,339 | 1,507 | 1,681 | 1,864 |
| | | 7/8 | 42,000 | 72 | 151 | 238 | 332 | 434 | 544 | 661 | 785 | 917 | 1,057 | 1,204 | 1,359 | | |
| FASTi-24 | 8,400 | 3/4 | 42,000 | 128 | 267 | 418 | 581 | 755 | 940 | 1,138 | 1,346 | 1,567 | 1,799 | 2,042 | 2,297 | 2,564 | 2,842 |
| | | 7/8 | 42,000 | 110 | 231 | 364 | 508 | 664 | 832 | 1,010 | 1,201 | 1,403 | 1,616 | 1,841 | 2,077 | | |

Drum Wire Rope Storage Capacity - Metric - Utility

| Series | Rated capacity kg | Rope Diameter mm | Min Req Break Strength* kg | Accumulated rope capacity in meters / number of layers | | | | | | | | | | | | | |
|----------|-------------------|------------------|----------------------------|--------------------------------------------------------|----|-----|-----|-----|-----|-----|-----|-----|-----|-----|-----|-----|-----|
| | | | | 1 | 2 | 3 | 4 | 5 | 6 | 7 | 8 | 9 | 10 | 11 | 12 | 13 | 14 |
| FASTi-16 | 3818 | 19 | 19051 | 26 | 53 | 84 | 116 | 151 | 188 | 227 | 269 | 313 | 360 | 408 | 459 | 512 | 568 |
| | | 22 | 19051 | 22 | 45 | 72 | 100 | 131 | 164 | 199 | 237 | 277 | 319 | 364 | | | |
| FASTi-24 | 3818 | 19 | 19051 | 39 | 81 | 127 | 177 | 230 | 287 | 347 | 410 | 478 | 548 | 622 | 700 | 782 | 866 |
| | | 22 | 19051 | 33 | 69 | 110 | 153 | 200 | 251 | 305 | 363 | 424 | 488 | 557 | | | |

* Note: The Minimum Required Breaking Strength for the wire rope needs to be the Rated Capacity multiplied by the Design Factor.
 Example: for the FASTi-16 (with a 5:1 Design Factor) 8,400 x 5 = 42,000 lbs.



Head office- Singapore
 UBI TECHPARK #07-19 (LOBBY B)
 10 UBI CRESCENT, SINGAPORE 408564
 T: +65 6635 4520 F: +65 6635 4527

Branch Office-Indonesia
 Ruko Sentra Menteng MN/ 49
 Bintaro Jaya Sektor 7,
 Tangerang Selatan 15224 Jakarta

Branch Office-India
 G15-, Sacred World,
 Vitthal Rao Shivarkar Road,
 Wanwadi, Pune,
 Maharashtra 411040, India

Branch Office-USA
 2860 Ogletown Road, Newark,
 DE 19713, United States

Email us at:
 sales@raahinternational.com