

# Product Features and Specifications

FA2i Infinity Series Winch - Capacity: 4,400 lbs (2000 kg)

PFS-FA2i-09072010

## Rugged Compact and Versatile Design

- Meets ANSI / ASME B30.7
- 5:1 design factor at rated load
- Top layer rated line pull
- "Lift to shift" winch mounted lever throttle
- Minimum 18:1 drum diameter to wire rope diameter ratio
- Compact gearbox-in-drum design
- Standard design temperature range is 0°C through 60°C
- Group of mechanism as per FEM: 5m
- Pre-certified lifting lugs

## Suitable for Hazardous Explosion Proof Environments

- Flameproof by design. Air motors (unlike electric motors) are inherently spark resistant.
- ATEX classification (as per directive EC 94/9/EEC). CE compliant models marked EX II 2 GD c 200°C X

## Powerful Radial Piston Air Motor

- Positive starting torque
- Infinitely variable speeds with precision spotting control
- Superior reliability in harsh environments

## Brake Systems

- Manual drum brake standard
- Optional auto drum brake and /or auto disc available
- Fully enclosed automatic oil bath "wet" disc brake sealed against moisture and contaminants
- **Ingersoll Rand recommends the use of automatic brakes whenever a winch is used for lifting**

## CE compliant versions provided with:

- Drum guard
- Overload protection (preset regulator)
- Emergency stop
- Muffler
- Automatic brake
- Limit switches
- CE documentation



FA2i with optional Auto Disc Brake, Drum Guard and Press Roller

## Options and Accessories

- DNV & ABS Type Approved models available
- Low temperature versions
- Overload and E-stop control system
- Remote controls
- Limit switches
- Tensioning manifold
- Drum guards\*
- Grooved drums
- Drum divider flanges
- Drum locks
- Spooling devices
- Marine paint systems
- Air line accessories

\* **Ingersoll Rand recommends using Drum Guards with all winches to prevent inadvertent contact with winch moving parts**



Head office- Singapore  
UBI TECHPARK #07-19 (LOBBY B)  
10 UBI CRESCENT, SINGAPORE 408564  
T: +65 6635 4520 F: +65 6635 4527

Branch Office-Indonesia  
Ruko Sentra Menteng MN/ 49  
Bintaro Jaya Sektor 7,  
Tangerang Selatan 15224 Jakarta

Branch Office-India  
G15-, Sacred World,  
Vithal Rao Shivarkar Road,  
Wanwadi, Pune,  
Maharashtra 411040, India

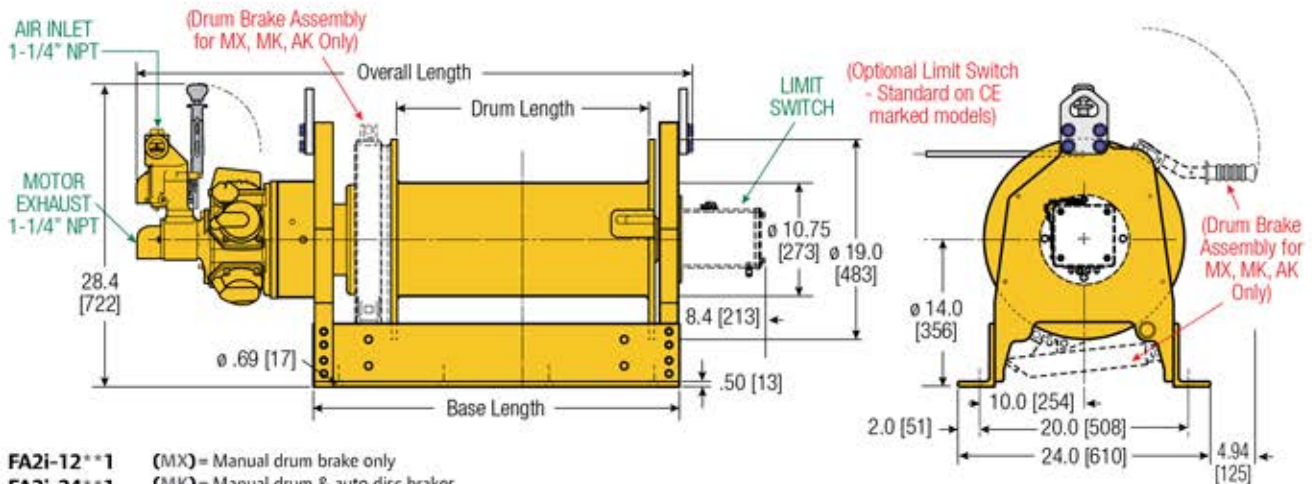
Branch Office-USA  
2860 Ogletown Road, Newark,  
DE 19713, United States

Email us at:  
sales@raahinternational.com

# Product Features and Specifications

FA2i Infinity Series Winch - Capacity: 4,400 lbs (2000 kg)

PFS-FA2i-09072010

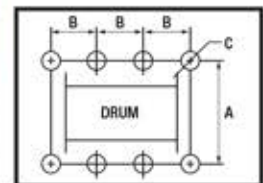


Dimensions shown are inches. Dimensions in Brackets [ ] are mm. Dimensions are subject to change. Contact factory for certified drawings.

## Dimensions: FA2i and Bolt Down Pattern

	Drum Length 12" [305 mm]			Drum Length 24" [610 mm]		
	Drum & Disc Brakes (MK & AK)	Disc Brake Only (XK)	Drum Brake Only (MX)	Drum & Disc Brakes (MK & AK)	Disc Brake Only (XK)	Drum Brake Only (MX)
Overall Length	40.8	1036	38.1	968	37.2	945
Base Length	22.8	579	20.11	511	22.8	579
'A'	20.0	508	20.0	508	20.0	508
'B'	9.0	229	7.5	191	9.0	229
'C'	0.69	18	0.69	18	0.69	18
Total # Holes	6		6		6	

### Bolt Down Pattern



'C' = Bolt Hole Inside Diameter

## Lift Ratings at 5:1 Design Factor (Performance at 6.3 Bar - 90 PSI at air inlet when winch is operating)

Model #	Top Layer		First Layer		Average Air Consumption <sup>(1)</sup>	Sound Level <sup>(2)</sup>	Inlet Size	Exhaust Size	Net Weight	
	Rated Capacity	Speed	Rated Capacity	Stall Pull					lbs	kg
FA2i	8 hp	4,400 lbs / 2000 kg	51 ft/min / 16 m/min	55 ft/min / 17 m/min	280 F/min / 8 m <sup>3</sup> /min	87 db(A)	1-1/4" NPT	1-1/4" NPT	850 lbs	386 kg

(1) Average Air Consumption is at rated load and speed at top layer (2) With optional muffler

## Drum Wire Rope Storage Capacity - Imperial - Utility

Series	Rated capacity lbs	Rope Diameter in	Min Req Break Strength* lbs	Accumulated rope capacity in feet / number of layers													
				1	2	3	4	5	6	7	8	9	10	11	12	13	14
FA2i-12	4,400	1/2	22,000	66	141	220	305	396	492	594	702						
		5/8	22,000	54	114	180	251	328	410								
FA2i-24	4,400	1/2	22,000	138	289	450	624	809	1,006	1,214	1,435						
		5/8	22,000	111	234	369	515	673	843								

## Drum Wire Rope Storage Capacity - Metric - Utility

Series	Rated capacity kg	Rope Diameter mm	Min Req Break Strength* kg	Accumulated rope capacity in meters / number of layers													
				1	2	3	4	5	6	7	8	9	10	11	12	13	14
FA2i-12	2000	13	9979	20	42	66	91	119	147	178	210						
		16	9979	16	34	54	76	99	124								
FA2i-24	2000	13	9979	41	86	135	187	242	301	364	430						
		16	9979	34	71	112	156	204	255								

\* Note: The Minimum Required Breaking Strength for the wire rope needs to be the Rated Capacity multiplied by the Design Factor. Example: for the FA2i-12 (with a 5:1 Design Factor) 4,400 x 5 = 22,000 lbs.



Head office- Singapore  
 UBI TECHPARK #07-19 (LOBBY B)  
 10 UBI CRESCENT, SINGAPORE 408564  
 T: +65 6635 4520 F: +65 6635 4527

Branch Office-Indonesia  
 Ruko Sentra Menteng MN/ 49  
 Bintaro Jaya Sektor 7,  
 Tangerang Selatan 15224 Jakarta

Branch Office-India  
 G15-, Sacred World,  
 Vitthal Rao Shivarkar Road,  
 Wanwadi, Pune,  
 Maharashtra 411040, India

Branch Office-USA  
 2860 Ogletown Road, Newark,  
 DE 19713, United States